

HONEYWELL SILENT KNIGHT


2 VIRTUAL
TRAINING
MANUAL



FED[®]

LEARNING CENTER



A person is seen from the side, interacting with a fire alarm control panel. The panel features a small LCD screen and a keypad. The person's hand is on the keypad. The background is a perforated metal wall with various fire alarm components, including a pull station labeled 'FIRE PULL DOWN' and several smoke detectors. The entire image has a blue color overlay.

HONEYWELL FIRE SOFTWARE SUITE (HFSS)

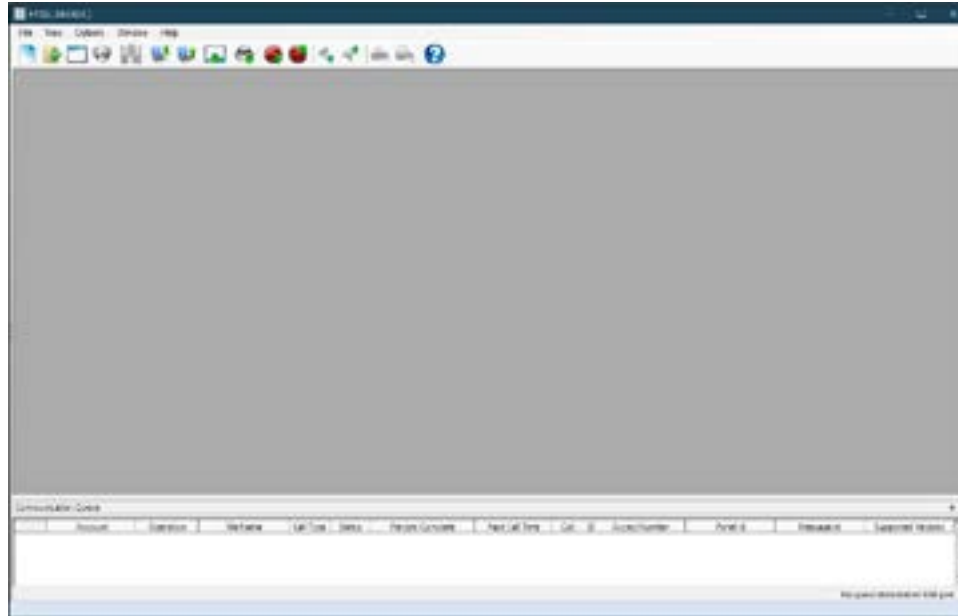
Laptop System Requirements

- Must be 64-bit Windows OS
- Supports Windows 8, 10, and 11
 - (Now supports Spanish Language Windows 10 operating system)
- Limited support for Windows 7
 - (Windows 7 no longer supported by Microsoft)
- Must have active USB port for USB to panel communication

Microsoft Windows is a trademark of the Microsoft group of companies.

HFSS

Click on the HFSS Icon to open the Honeywell Fire Software Suite

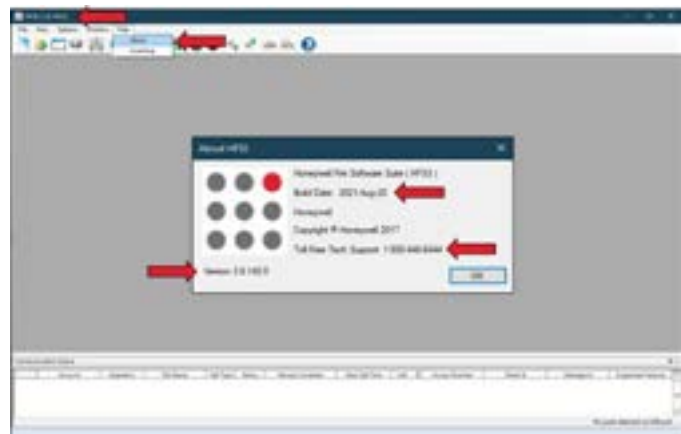


HFSS Menu

Help

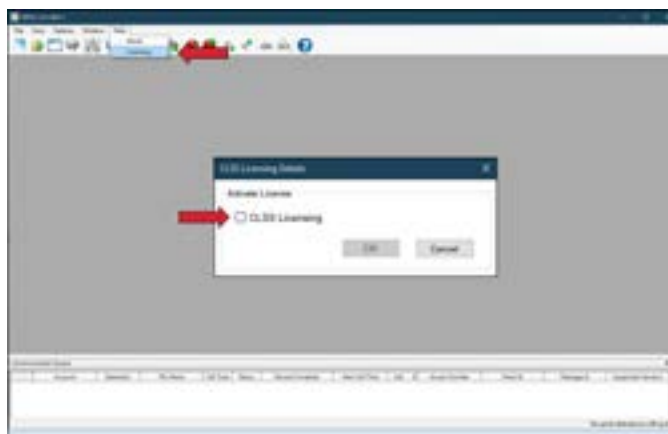
About

- Provides Build Date
- Tech Support Phone #
- Version
 - Version is also displayed in upper left corner of HFSS



Licensing

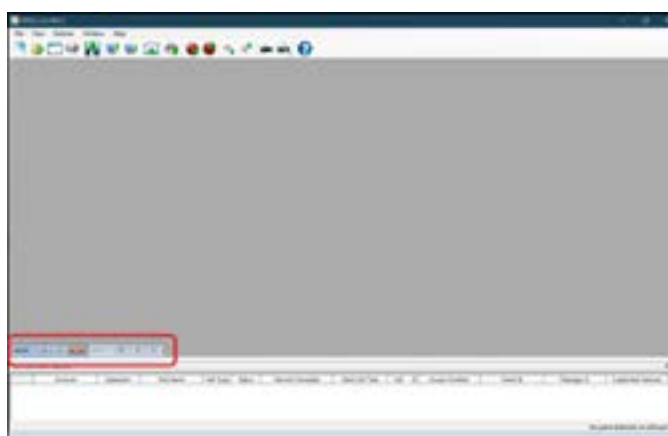
- CLSS Licensing
 - Leave unchecked
 - Requires a CLSS account
 - Used with CLSS services



Window

Allows you to set the view when you have more than one panel program open

- Cascade
 - Offsets the open program windows
- Tile
- Horizontal
 - Programs displayed stacked
- Vertical
 - Programs displayed side by side
- Arrange Icons
 - Icons arranged at the bottom of the window



***Recommended to only have one program open at a time**

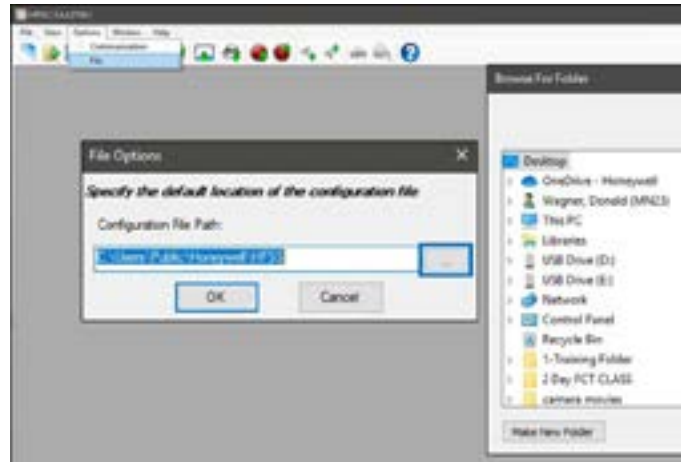
Options

Communications

- Select method used to communicate to the panel
 - USB

File

- Specify the default location where you want to save your HFSS files
- Click ellipsis
 - To browse to a specific folder



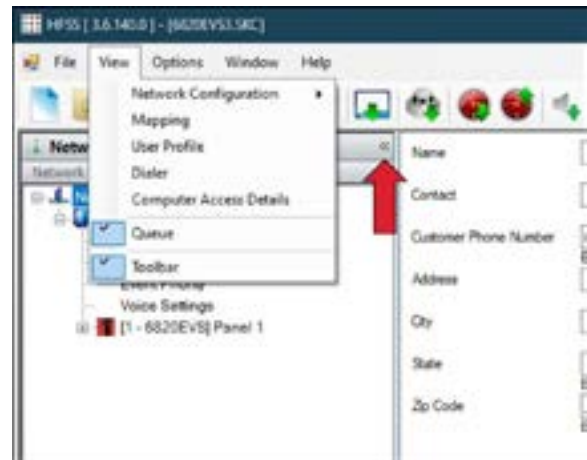
View

Provides access to the directory tree and programming tabs when a configuration file has been opened

- Including when the directory tree is minimized
 - Clicking on double arrows will minimize and restore the directory tree

Select and deselect what you want to see on the screen

- Queue
- Toolbar
 - Remove checkmarks to hide screen elements

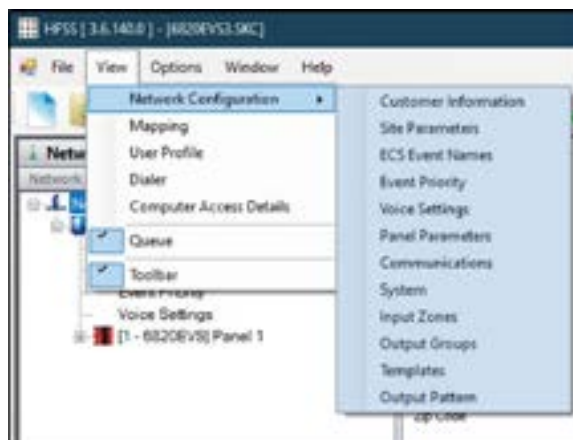


Minimizing/hiding screen elements provides an expanded work area when setting up a config file!

Network Configuration

Access to all Site and Panel programming options in the Directory Tree

- Not all options are available from the View menu
 - Programming options such as adding and deleting sites or panels must be accessed by right clicking on a Site or Panel



Mapping

- Allows access to the mapping window to assign the inputs to the outputs

User Profile

- Used to configure user's codes and access rights

Dialer

- Provides access receiver reporting window

Computer Access Details

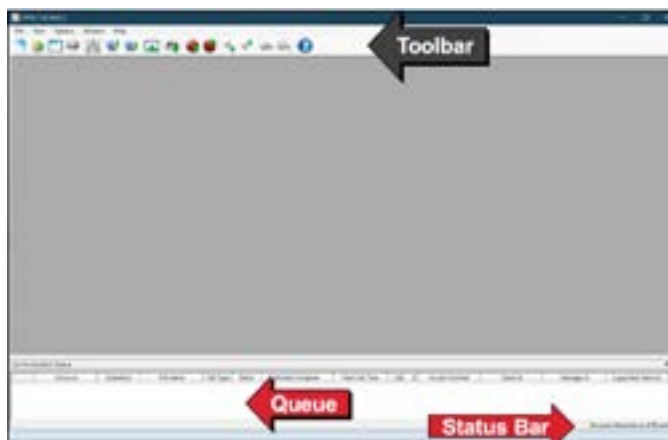
- Click to view computer access and panel details

Toolbar

- Is the row of icons just beneath "File, View, Options, and Help"

Queue

- The white area at the bottom of the screen
- Shows information related to communicating with the Network/FACP



Status Bar

- Is at the very bottom of the screen, below the queue
- When you attempt communications the status bar will change showing you what status the communication is in

Thumbtack



Click on Thumbtack to Minimize Your Queue

Move cursor to Communication Queue to restore briefly

Click on thumbtack again to restore default view

File

New Configuration

- Can be used for single panel new program

Open Configuration

- Opens an existing account / newly uploaded account

Open Detector Status

- Opens an existing detector status report

Open Event History

- Opens an existing event history / newly uploaded history

Get Configuration (Upload Network)

- Transfers the programming information from the panel to the laptop

Set Configuration (DNLD Network)

- Transfers the programming information from the laptop to the panel

Get Event History

- Performs a communication from the panel to the laptop that shows the panel history

Get Detector Status

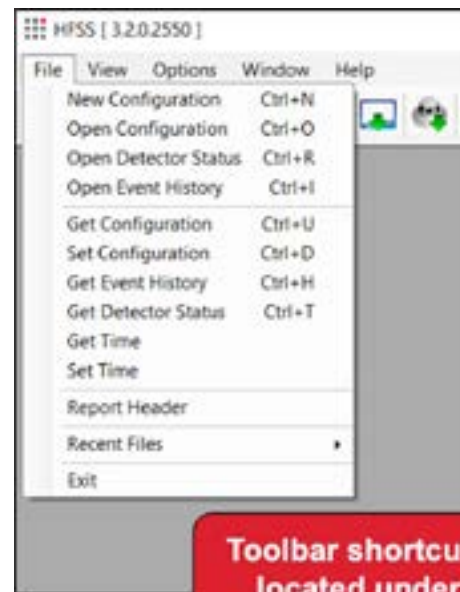
- Performs a communication from the panel to the laptop that shows the status of detectors on the SLC

Get Time

- Performs a communication from the panel to the laptop showing you what time the panel is currently set at

Set Time

- Performs a communication from the laptop to the panel setting the time of the panel to the time of your computer



***Get Time and Set Time will display the time and date in the File Name column in the Queue**

Report Header

Create Your own Custom Report Header

- Name
- Location
- Email
- Even your own company logo



Communication with Computer

HFSS Status Bar

- Must show Waiting on USB port

The Panel

- Must be in NORMAL or TROUBLE

System will Prevent Get/Set Functions

- Can not be in Fire Alarm
- Can not be in Supervisory Alarm
- Can not be in Keypad Programming
- Must wait until "SLC Initialization" is complete
 - You can SET Config but can not GET Config while SLC Initializes

Get Configuration

File Name

Name your file so its easy to find otherwise it will auto-name

Computer Access

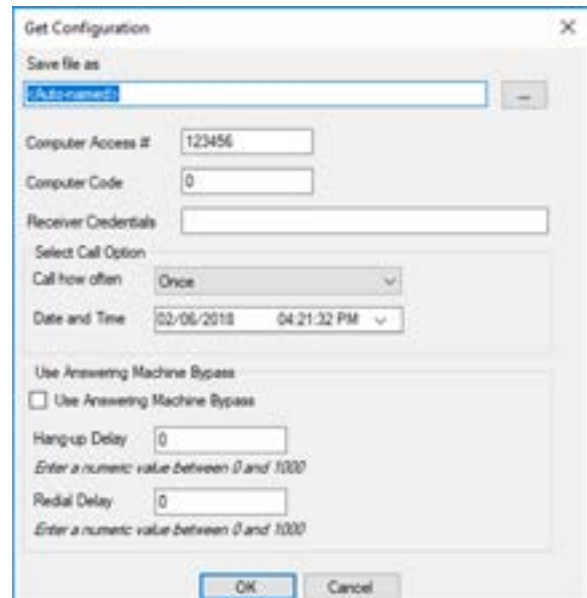
- Default = 123456
 - FACP in class was changed to 3333 in keypad programming

Computer Code

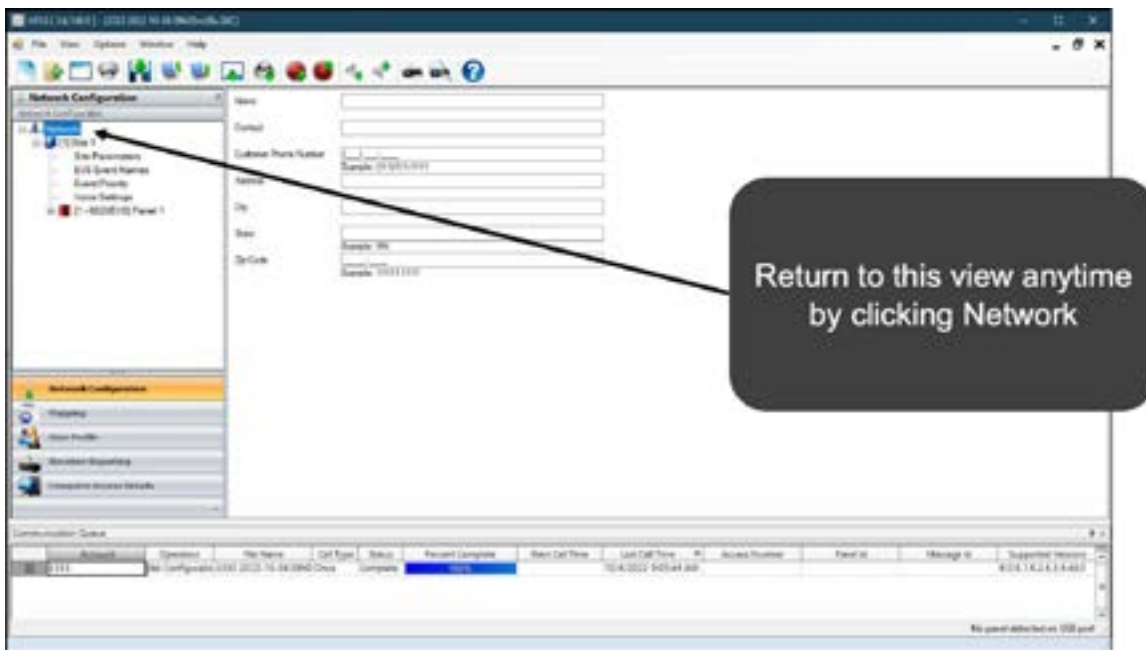
- Default = 0

Receiver Credentials

- Not supported



Customer information screen



Get Configuration will open automatically to this view.

Directory Tree

Click on Minus Sign (-)

- To hide items in the directory tree

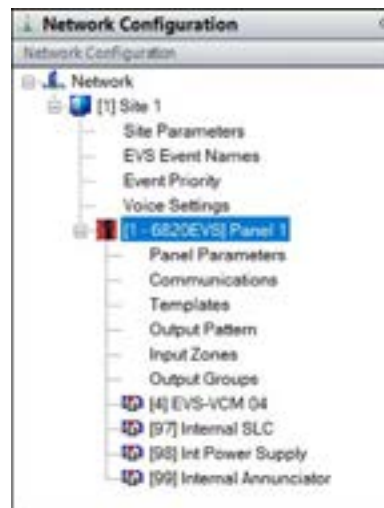


Click on Minus Sign (-)

- To hide items in the directory tree

Click on the Plus Sign (+)

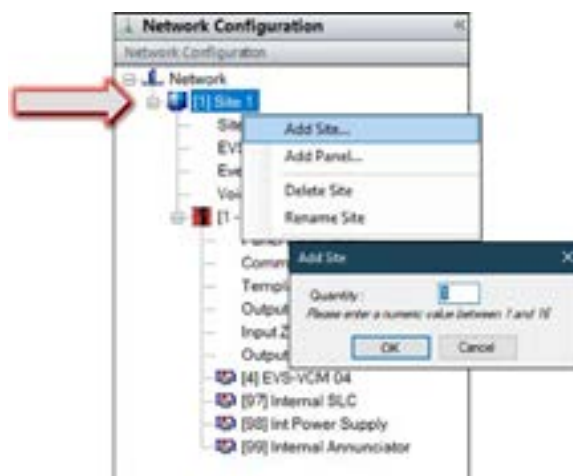
- To expand the directory tree to view hidden items



Right Click to:

- Add Site
- Adds additional Sites to the program
 - 17 Sites total

***You can have a total of 17 Sites**



Right Click to:

Add Site

- Adds additional Sites to the program
 - 17 Sites total

Add Panel

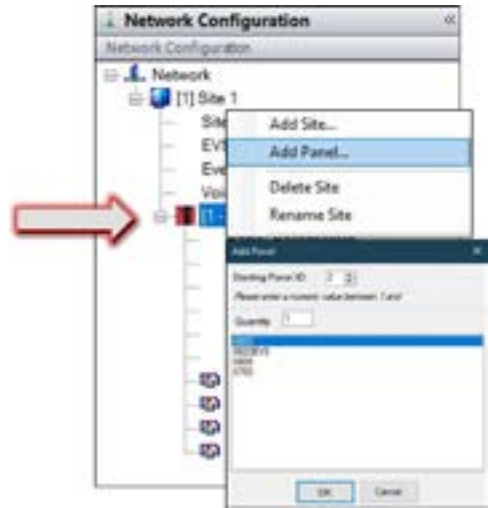
- Adds panels to the selected Site
 - Can have 1 panel per site
 - Quantity must be set to 1

Delete Site

- Can't delete sites with panels

Rename Site

- Customize site names

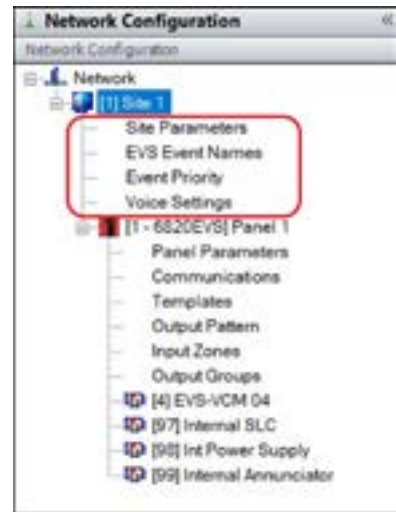


***You can have a total of 17 Sites**

The Menu Items below the Site are Primarily used in EVS Applications

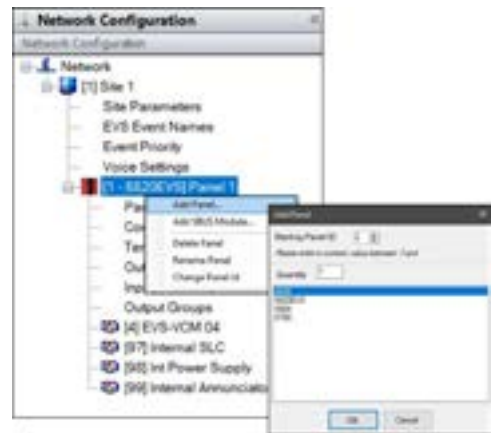
- Site Parameters
- EVS Event Names
- Event Priority
- Voice Settings

Site "Options" will be covered during EVS

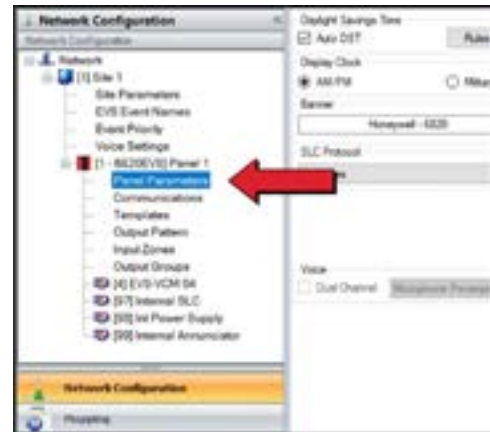


Right Click on Panel to:

- Add Panel
 - Can only add panels from the site menu
- Add SBUS Module
 - Used to add SBUS modules to the panel
- Delete Panel
- Rename Panel
 - Customize panel name
- Change Panel Id
 - Panel Id in HFSS must match Panel Id on panel or communications with FACP will fail



Click on Panel (+) to Expand
then Panel Parameters



Panel Parameters

Auto Daylight Savings Time
Can change the rules



Auto Daylight Savings Time
Can change the rules
Change clock
AM/PM
Military



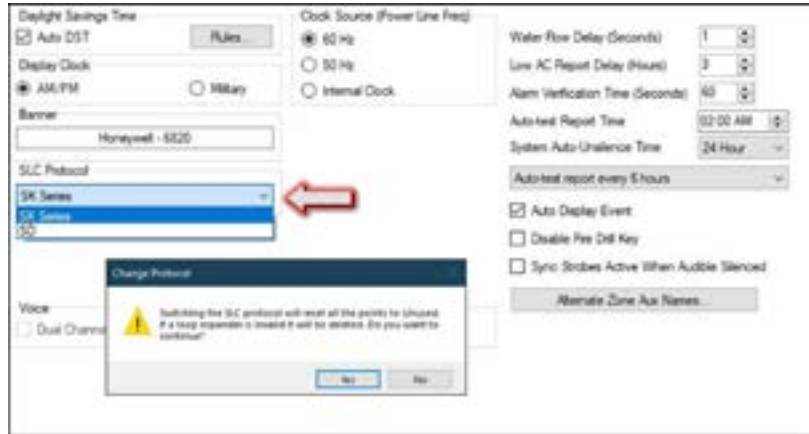
Custom Banner

- 40 characters
- Auto center
 - Displays in Normal mode only



SLC Protocol

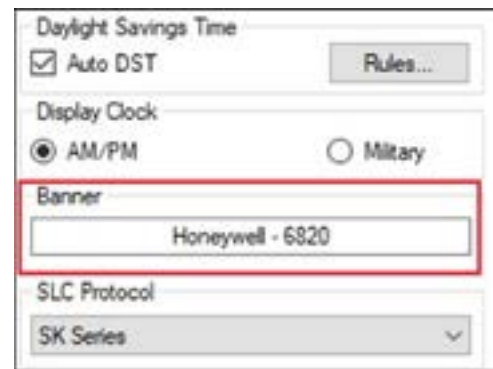
- SK Series
 - Default
- SD



Clock Source

Selects the line frequency at which the panel operates

- 60 Hz
 - Do not change in the USA, Canada, and Mexico
- 50 Hz
- Internal Clock
 - Uses internal quartz crystal



Water Flow Delay

- 1-90 seconds, global

Low AC Report Delay

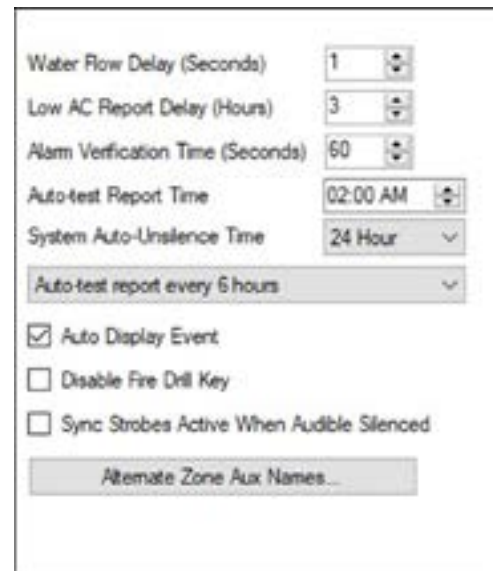
- Set Delay
 - UL--Must be on site within 4 hours of “Low AC” report

Alarm Verification Time

- 1-250 seconds
- Enabled in Input Zones

Auto-Test Report time

- Set time

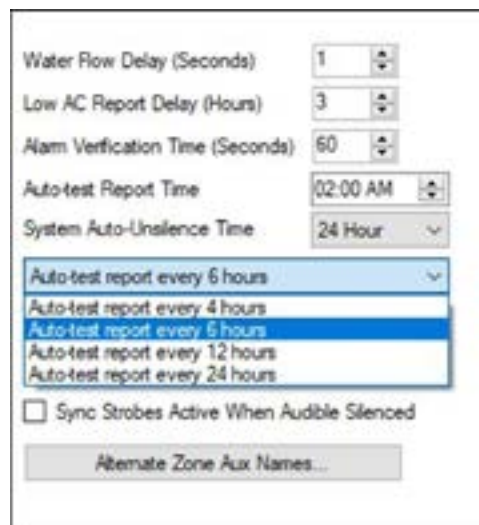


System Auto-Unsilence Time

4 or 24hrs

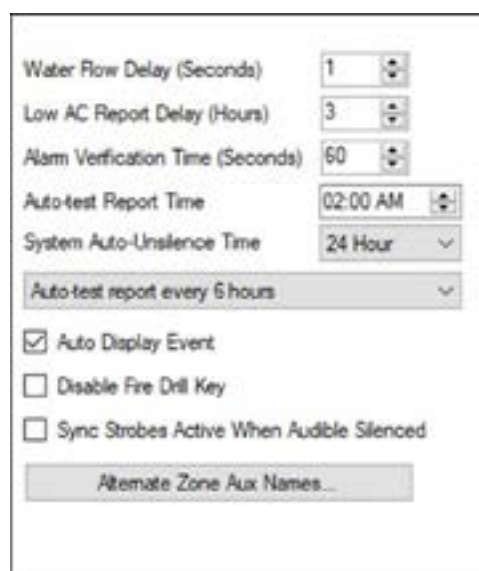
Auto-Test Report Every

4,6,12 & 24hrs



Auto Display Event

- Enabled by Default
- The oldest un-acknowledge event will automatically display on the control panel and remote annunciators
 - Example...both phone lines in trouble
 - Displays phone line 1
 - Instead of “trouble cnt (2)”
 - Alarms and Supervisory over-ride troubles



Disable Fire Drill Key

Sync Strobe Active When Audible Silenced

Selective silence feature that allows you to silence the horns and leave the strobes active

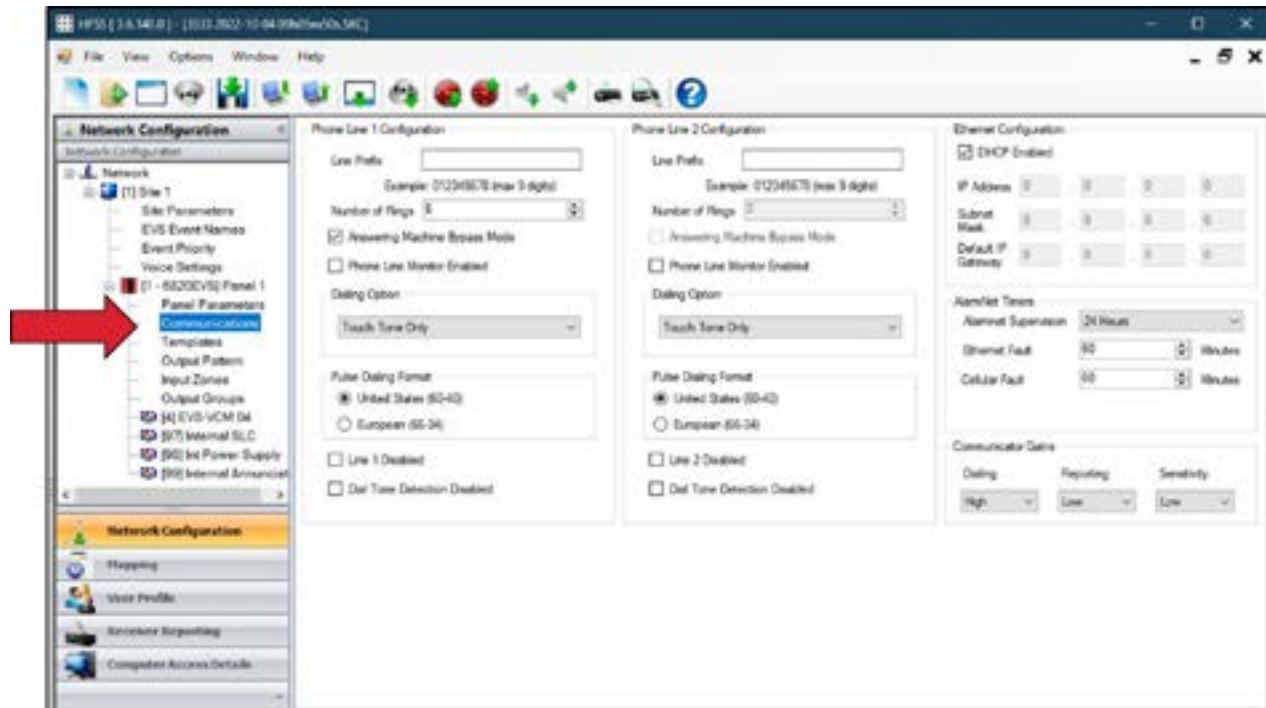
Custom naming for Zone Aux 1 & Zone Aux 2 events

- Up to 20 characters



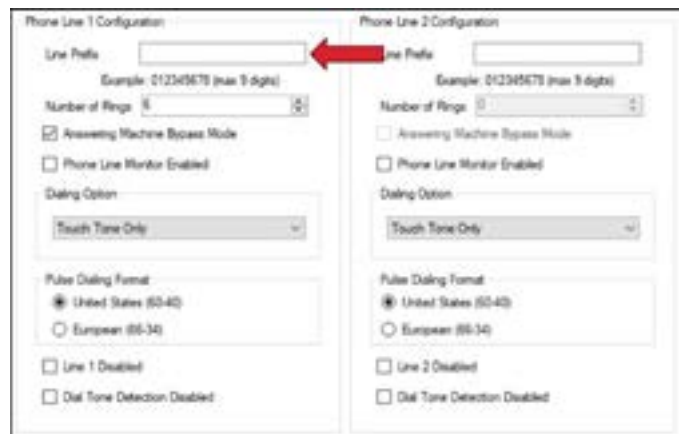
Directory tree

Communications



Line Prefix

- Enter up to 8 characters to be used by the Panel's line
- PBX dial-out codes
- Long distance access codes
- Pause or other characters



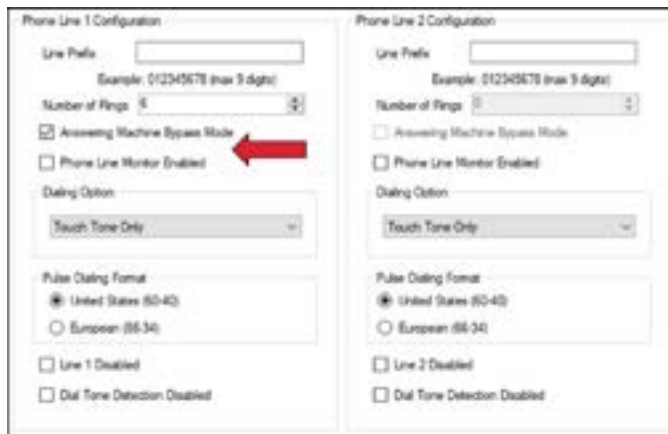
Number of Rings

Answering Machine Bypass

- Both Settings are no longer used

Phone Line Monitoring

- Will report “Phone Line #” trouble if less than 3 VDC
- Default is already unchecked



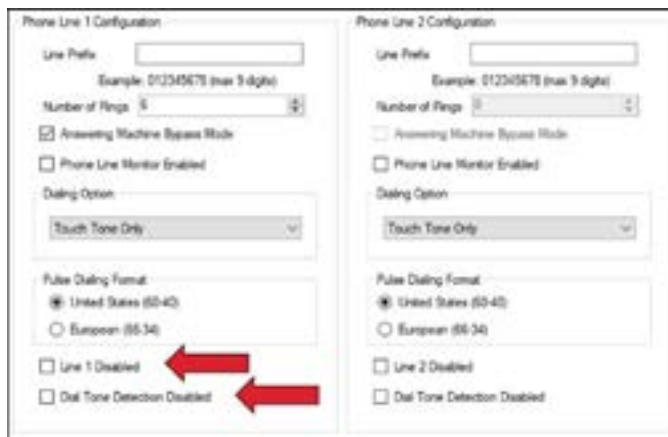
***Use a Meter on the Telco Tip and Ring to measure the voltage for a Phone Line trouble**

Line Disabled

- Check when not using line 1 or 2
- Used for IPDACT communicators

Dial Tone Disabled

- Will dial out without Tone needed
- Used for IPDACT or “HWF2-COM”



Ethernet Configuration

- DHCP or Static - information required for AlarmNet Internet connection

AlarmNet Timers

- AlarmNet Supervision
- Ethernet Supervision
- Cellular Supervision



Communicator Gains

- Dialer (adjustable dial strength)
 - High
 - Normal
 - Low
- Reporting (adjustable format strength)
 - High
 - Normal
 - Low
- Sensitivity
 - High
 - Normal
 - Low



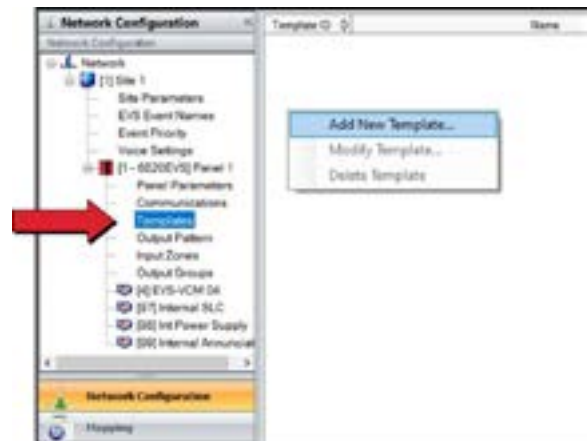
High = 9 DB Attenuation, Normal = 6 DB Attenuation, Low = 3 DB Attenuation

Templates

Click on Templates

Right click anywhere in the empty template window

- Add New template
- Modify Template
- Delete Template



*If you need to disable A LOT of groups, you can place them in a template and disable the template

To Add a Group to a Template

- Click on the group
 - In the available groups window
- Click the Arrow
 - Group moves over to the selected groups window
- Single Arrow
 - Moves the selected groups
- Double Arrow
 - Moves ALL
- Double-clicking the group will also cause it to move



Templates can also be used in Mapping

SBUS Module Options

You can access the SBUS module options:

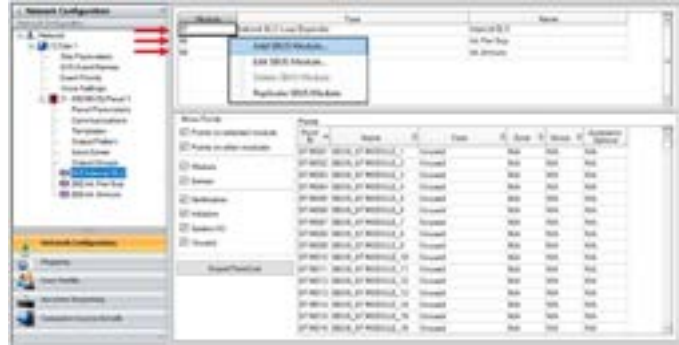
- On the Directory Tree
 - Right-click on the panel
 - Add SBUS Module
 - Right-click on any SBUS module
 - Add SBUS Module
 - Rename SBUS Module
 - Edit SBUS Module
 - Replicate SBUS Module



*Left click on any SBUS module to display the System View which displays all Input and Output points

You can access the SBUS module options:

- On the Directory Tree
 - Right-click on the panel
 - Right-click on any SBUS module
- You can also:
 - Right-click on any SBUS module displayed above the points to access the SBUS Module options



***Left click on any SBUS module to display the System View which displays all Input and Output points**

Add SBUS Module

- Select to add SBUS device

Edit SBUS Module

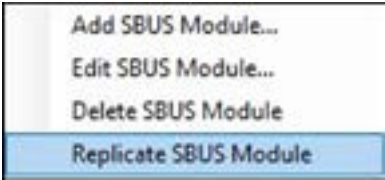
- Configure the SBUS options

Delete SBUS Module

- Deletes the selected SBUS Module

Replicate SBUS Module

- Automatically adds the same SBUS device
 - Saves time from locating SBUS in the Add SBUS window



Add SBUS module

Displays compatible SBUS devices

Select from the list of available SBUS modules

- Click: OK

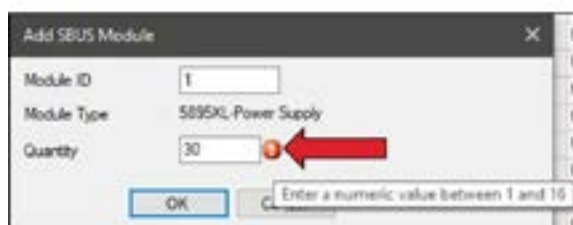
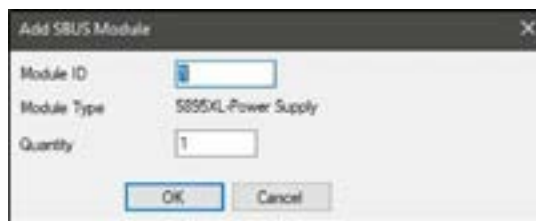
Module Descriptions are provided below the list of available SBUS modules



Add SBUS Module Window

On selected module

- Enter Module ID (SBUS address)
 - From 1 to 63
- Enter Quantity
 - Enter the number of SBUS devices being added
 - Module ID (SBUS Address) will follow sequentially



Entering an invalid number will display !
(Mouse over ! to show description)

Edit SBUS

Right-Click on SBUS module to edit

- Select Edit SBUS Module

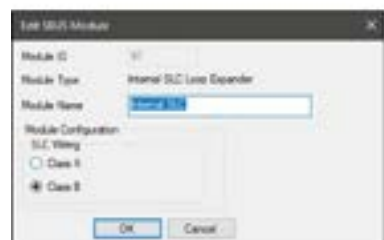


Internal SLC Module 97

- Module ID is preset and cannot be changed

Edit

- Module Name
- SLC Wiring
 - Class A or B



Right Click to Add a SBUS Module

Internal Power Supply Module 98

- Module ID is preset and cannot be changed

Edit

- Module Name
- SBUS Wiring
 - Class A or B



Module 98 can not be changed

SBUS Modules that have dipswitches

Edit

- Module ID
- Module Name
- SBUS Wiring
 - Class A or B

SBUS can be wired Class A



Show Points

Filter and View Relevant Information

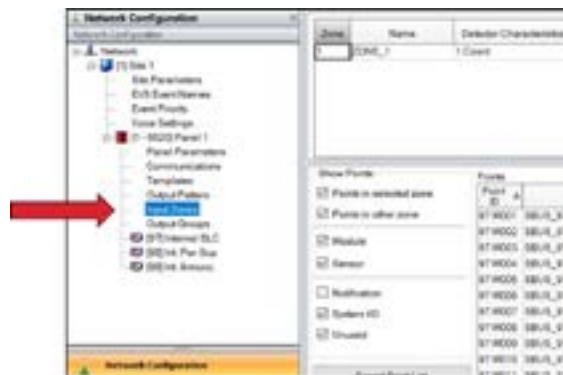
- Points on selected module
 - Displays points on the selected module only
- Points on other modules
 - Displays points on all modules and hides points on selected module
- Modules and/or sensors
 - Can choose to view just modules or just sensors
- Notification
 - Displays points typically found in output groups
- Initiation
 - Displays points typically found in input zones
- System I/O
 - Displays system event points (e.g., aux power points)
- Unused
 - Displays all unused points

Point ID	Name	Type	Zone	Group	Address/Filter
SBUS_01	SBUS Power Supply	SBUS Power Supply			
SBUS_02	SBUS_02	SBUS			
SBUS_03	SBUS_03	SBUS			
SBUS_04	SBUS_04	SBUS			
SBUS_05	SBUS_05	SBUS			
SBUS_06	SBUS_06	SBUS			
SBUS_07	SBUS_07	SBUS			
SBUS_08	SBUS_08	SBUS			
SBUS_09	SBUS_09	SBUS			
SBUS_10	SBUS_10	SBUS			
SBUS_11	SBUS_11	SBUS			
SBUS_12	SBUS_12	SBUS			
SBUS_13	SBUS_13	SBUS			
SBUS_14	SBUS_14	SBUS			
SBUS_15	SBUS_15	SBUS			
SBUS_16	SBUS_16	SBUS			
SBUS_17	SBUS_17	SBUS			

Input Zones

Click on Input Zones

- Screen for adding
 - Zones
 - Assigning zones to Input Points
 - Setting Zone characteristics



Programming

- Input points
- Detectors
- Pull Stations
- Monitor, minimon

Adding a Zone

Left click, right click on a zone to add more zones

Click: Add new zone

- Enter starting number
 - Starting zone number will default to next available zone
- Indicate number of zones



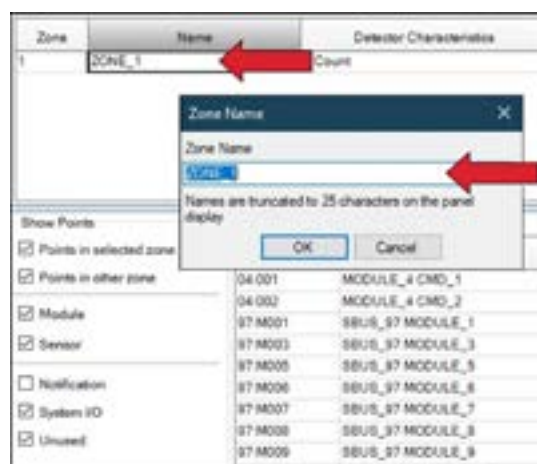
SK-6700 = 125 Zones, SK-6808 = 250 Zones, SK-6820/6820EVS = 999 Zones

Naming a Zone

Right click on the zone name

Change the name of a zone

- 25 characters max



Detector Characteristics

2 Count

- 2 detectors to activate an alarm
- Waterflow and pull station are still instant

Alarm Verification

One detector has to go into alarm twice

- First time panel resets
- 2nd time, if within alarm verification time, the panel will go into alarm

Positive Alarm Sequence

- 15 second delay on alarm
- Giving someone with authority, time to active a PAS input for additional 180 seconds
 - NFPA 72 6.8.1.3.1.2
 - Otherwise goes into alarm

Single Interlock

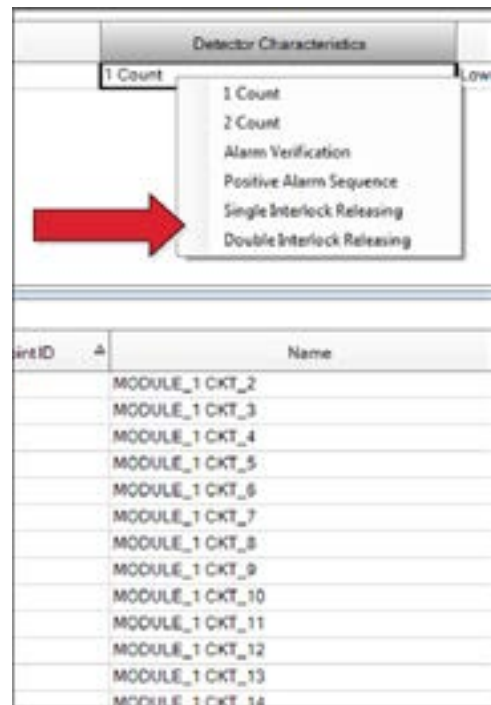
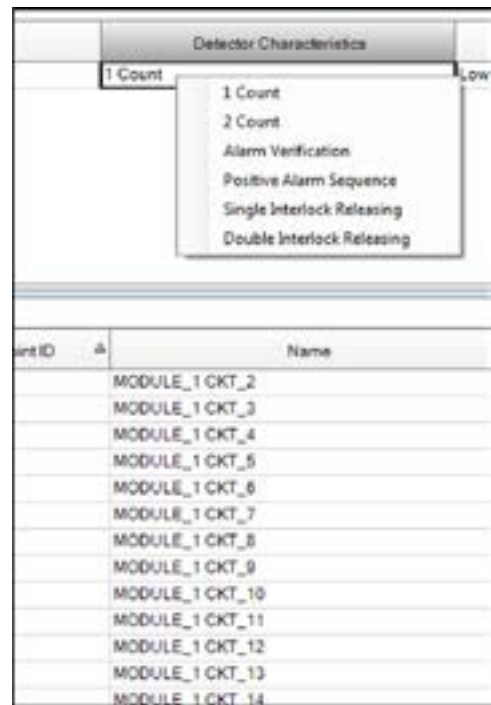
Two addressable detectors
Or manual release switch

Double Interlock

Combination of

- Interlock switch
- Addressable detectors
- Manual release switch

Detectors MUST be addressable detectors!



Zone Characteristics

Heat Sensitivity

Left click, right click to select

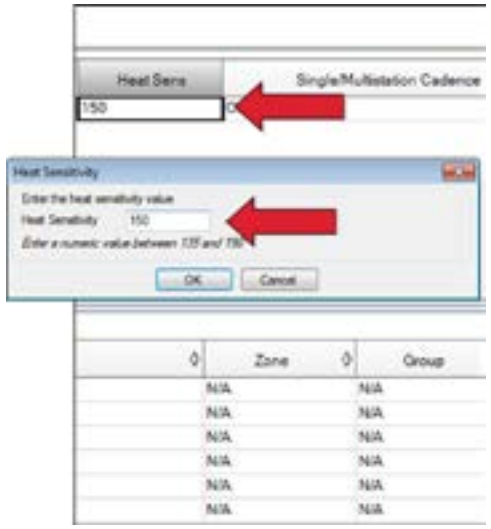
SK-HEAT-HT

- 135 – 190 degrees

SD505-HEAT

- 135 – 150 degrees

For variable, resettable heat detectors



HEAT and HEAT-ROR (Rate of Rise) are fixed temperature and not affected by this setting

Single/Multistation Cadence

Fire Alarm

- SD505-6SB

SD sounder base only



Single/Multi-station Cadence

Fire Alarm

- Sounder Base
 - B200SR
 - B200SR-LF
 - NO ANSI 4.0
- Intelligent sounderBase
 - B200S
 - B200S-LF
 - Built-in power supervision



Single/Multi-station Cadence

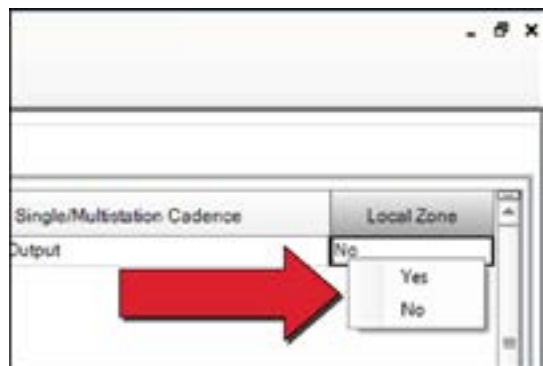
CO Alarm

- B200S
- B200S-LF



Local Zone

- Left click, right click to select
- Determine if zone event will notify central station?
 - Example = dorm rooms, hotel rooms, apartments
- Meant for sounder base applications
 - B200SR
 - B200S
 - B200S-LF
 - SD505-6SB

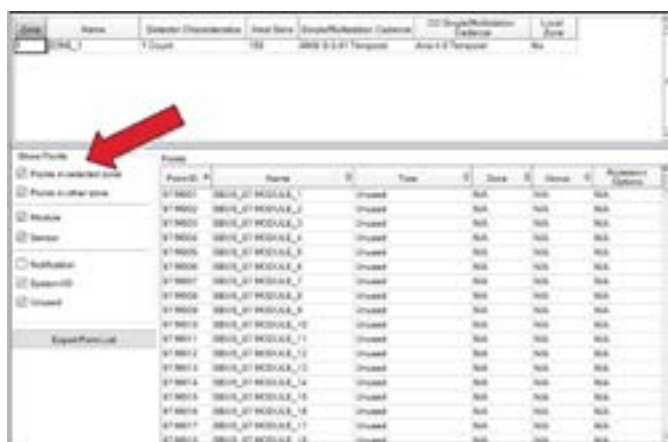


Input Zones

Show Points

Filter and View Relevant Information

- Points in selected zone
 - Displays points on the selected zone only
- Points in other zones
 - Displays points on all zones and hides points on selected zone
- Modules and/or sensors
 - Can choose to view just modules or just sensors
- Notification
 - View the points typically found in Output groups
- System I/O
 - Displays system event points (e.g., aux power points)
- Unused
 - Displays all unused points



Recommend viewing only Input Points while in Input Zones

Editing SLC Points

Zone	Name	Detector Characteristics	Heat Sens	Single/Multistation Cadence	CO Single/Multistation Cadence	Local Zone
1	ZONE_1	1 Count	150	ANSI 5-3.41 Temporal	Ansi 4.0 Temporal	No

Show Points		Points					
		Point ID	Name	Type	Zone	Group	Accessory Options
<input checked="" type="checkbox"/>	Points in selected zone	97-M001	SBUS_97 MODULE_1	Addr Init Switch Manual Pull	1	N/A	N/A
<input checked="" type="checkbox"/>	Points in other zone	97-M002	SBUS_97 MODULE_2	Addr Init Switch Waterflow	1	N/A	N/A
<input checked="" type="checkbox"/>	Module	97-M003	SBUS_97 MODULE_3	Addr Init Switch Supervisory	1	N/A	N/A
<input checked="" type="checkbox"/>	Sensor	97-S001	SBUS_97 SENSOR_1	Addr Init Det Photo	1	N/A	N/A
<input type="checkbox"/>	Notification	97-S002	SBUS_97 SENSOR_2	Addr Init Det Alarm Photo/Alarm CO	1	N/A	N/A
		97-S003	SBUS_97 SENSOR_3	Addr Init Det Alarm Photo/Alarm CO	1	N/A	N/A

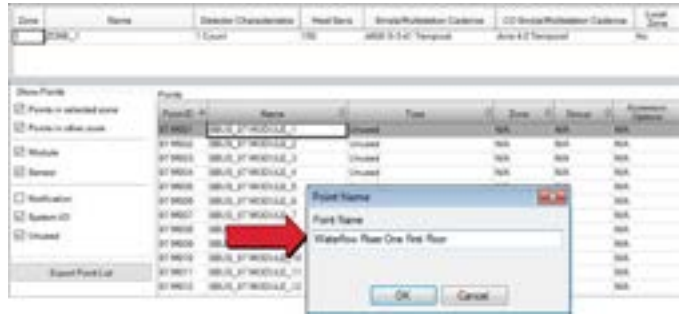
There are Two Categories

- Modules
- Sensors

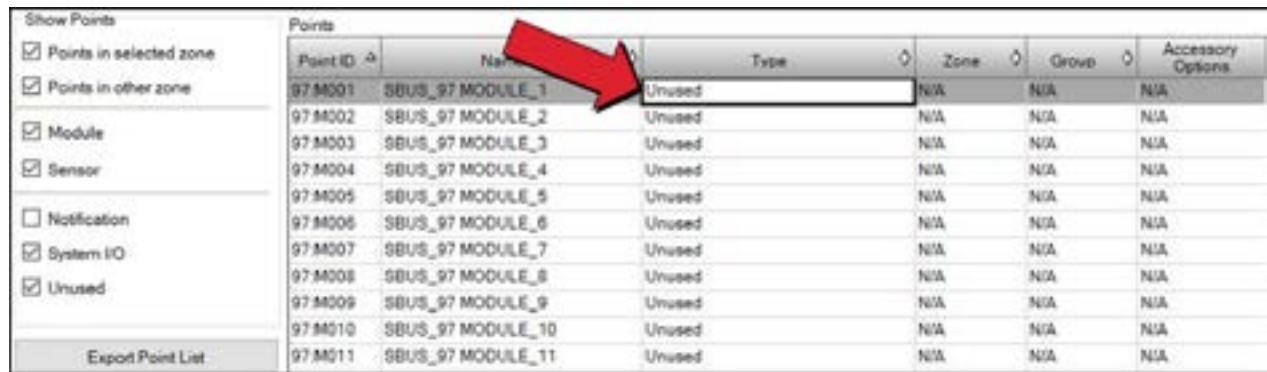
SD devices do not use Modules/Sensor

Editing Input Point Names

Left Click, Right Click on Name
Up to 40 characters



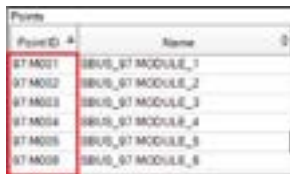
Editing Input Point Type



Left Click, Right Click on the Point Type
Select its attributes

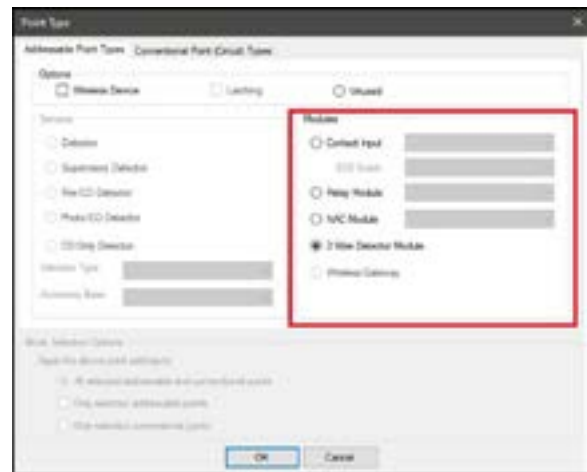
Editing Modules

Only Module Types will be Available



- Contact Input
- Relay (Outputs)
- NAC (Outputs)
- 2-Wire Detector Module

Sensor options are grayed out

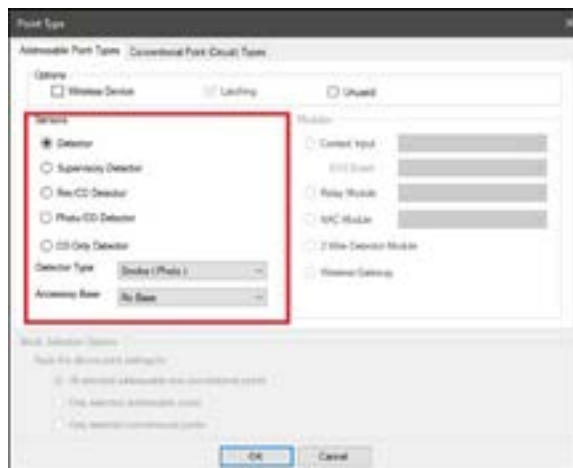


Editing Sensor

Only Sensor Types will be Available

Point ID	Name
ST-5001	IBUS_3T SENSOR_1
ST-5002	IBUS_3T SENSOR_2
ST-5003	IBUS_3T SENSOR_3
ST-5004	IBUS_3T SENSOR_4
ST-5005	IBUS_3T SENSOR_5
ST-5006	IBUS_3T SENSOR_6

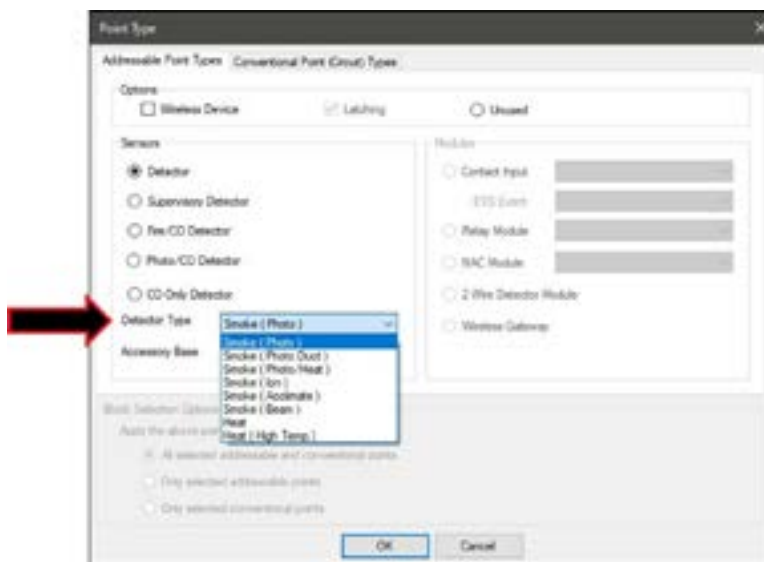
- Detector
- Supervisory Detector
- CO/Fire Detector
- Photo/CO Detector
- CO Only Detector
- Accessory Base



Module options are grayed out

Detector

Alarm Event



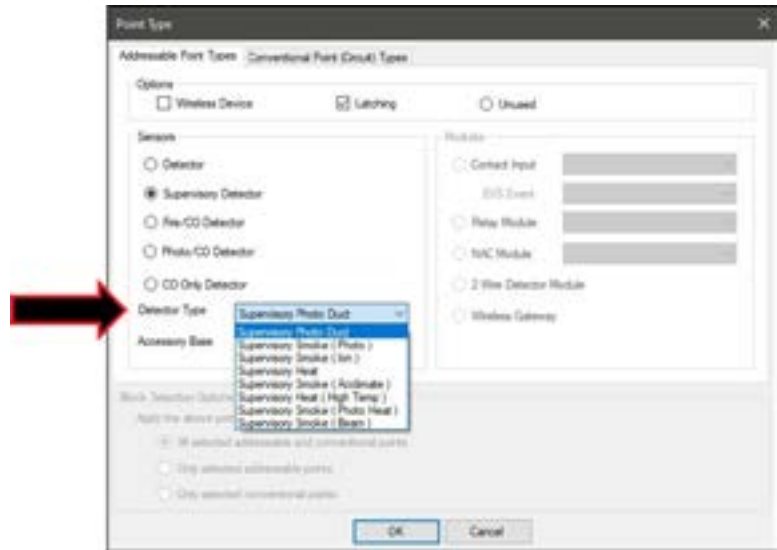
Supervisory Detector

Supervisory Event

- Avoids potential false alarms

Used In

- Assisted Living
- Dorms
- Hotel Rooms



CO/Fire Detector

Both Alarm

- CO
- Fire

Supervisory CO

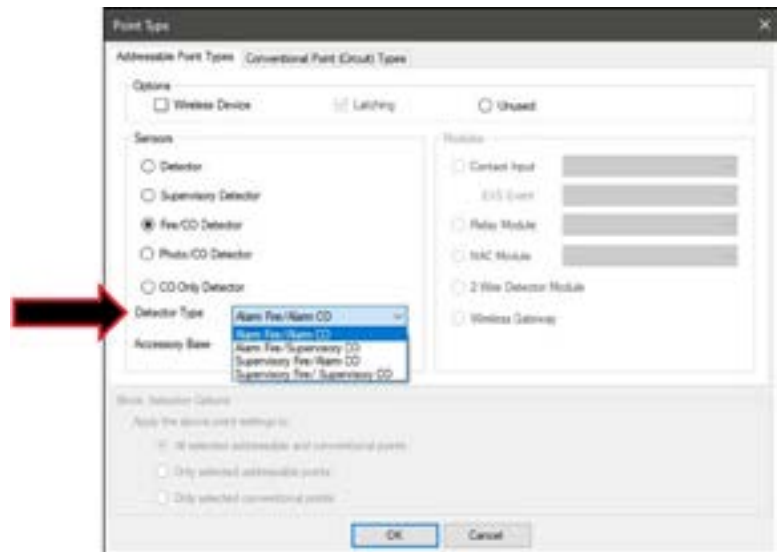
- Alarm Fire

Alarm CO

- Supervisory Fire

Both Supervisory

- CO and Fire

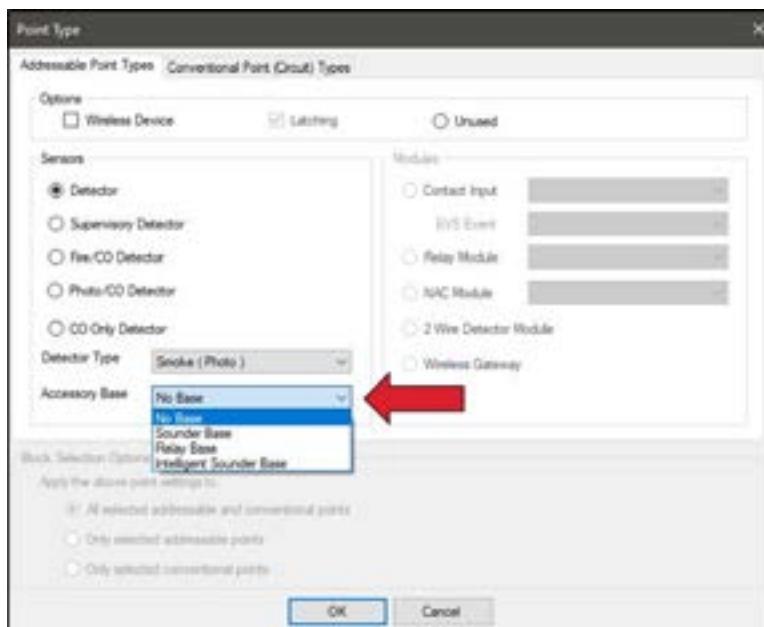


Adding Accessory Base

Add Under Sensor

Click on the drop-down arrow to select accessory base type

- **No Base**
 - Select for standard and Isolator bases
- **Sounder Base**
 - B200SR
 - B200SR-LF
 - NO ANSI 4.0
- **Relay Base**
 - B224RB
- **Intelligent Sounder Base**
 - B200S
 - B200S-LF
 - Built-in power supervision

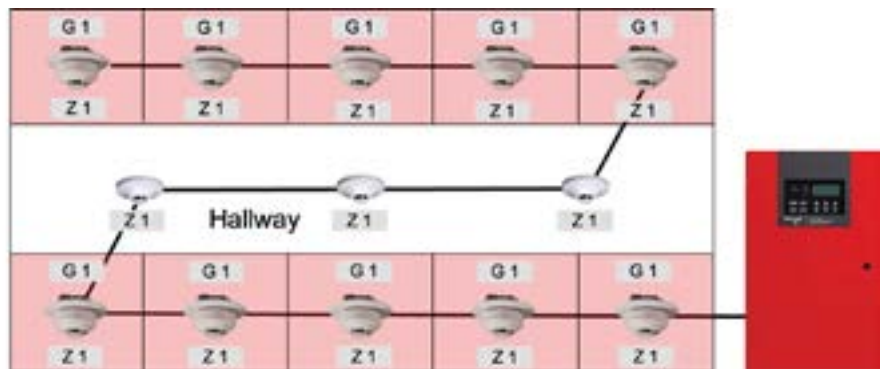
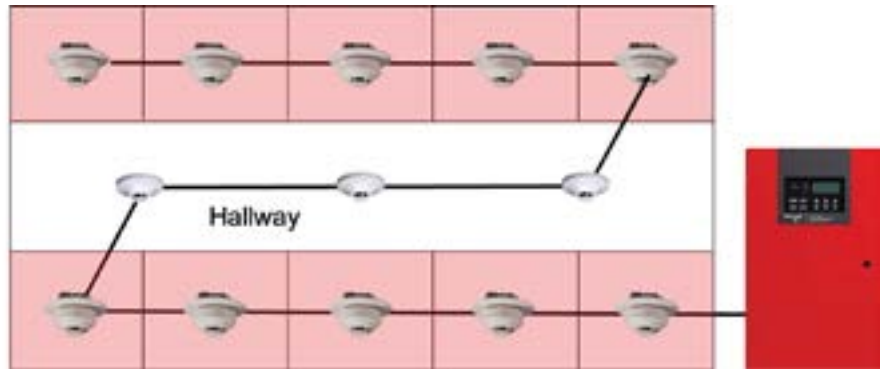


Zone	Name	Detector Characteristic	Heat Sens	Single/Multistation Cadence	CO Single/Multistation Cadence	Local Zone
1	FIRST FLOOR	1 Count	150	ANSI S-3.41 Temporal	Ansi 4.0 Temp	Yes
2	SECOND FLOOR	1 Count	150	ANSI S-3.41 Temporal	Ansi 4.0 Temporal	No
3	THIRD FLOOR	1 Count	150	ANSI S-3.41 Temporal	Ansi 4.0 Temporal	No

Point ID	Zone	Group	Accessory Options
97-M001	1	N/A	N/A
97-M003	1	N/A	N/A
97-M005	1	N/A	N/A
97-S001	1	N/A	SS1
97-S002	1	N/A	N/A
97-S003	1	N/A	N/A
97-S004	1	1	SYB MAP
98-006	N/A	SYS	N/A

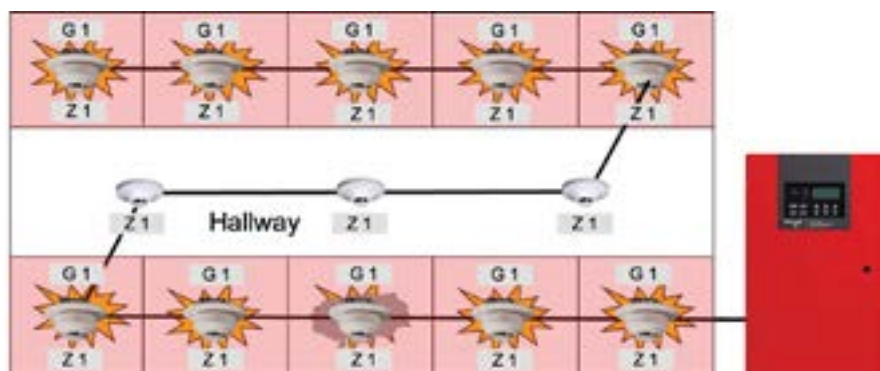
- **Please Note:** Selecting **Single Station** or **Multi-Station** will force the zone the device is assigned to, to be automatically converted into a Local Zone.
 - If you need the zone to report to central station, you need to change back to Local Zone: NO

System Map Only (Sys Map)



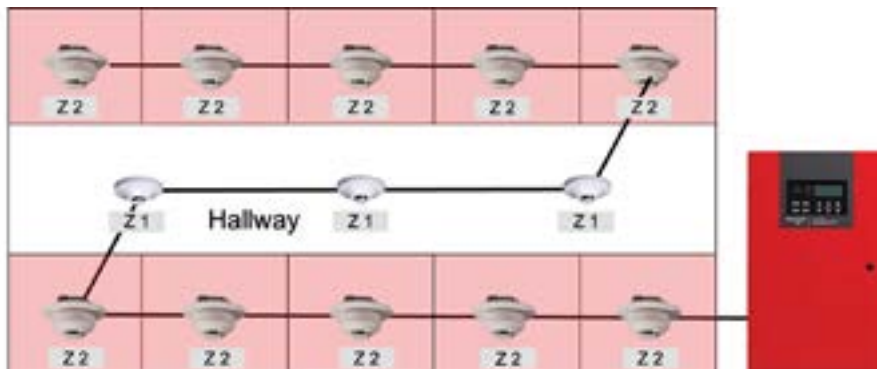
Detector with Sounder Base in Each Room

- All detectors in rooms are assigned to a zone
- All sounder bases are assigned to a group
- Sounder base activation will be determined by mapping (Similar to programming a NAC circuit)



- When detector senses smoke
- Mapped sounder bases will activate

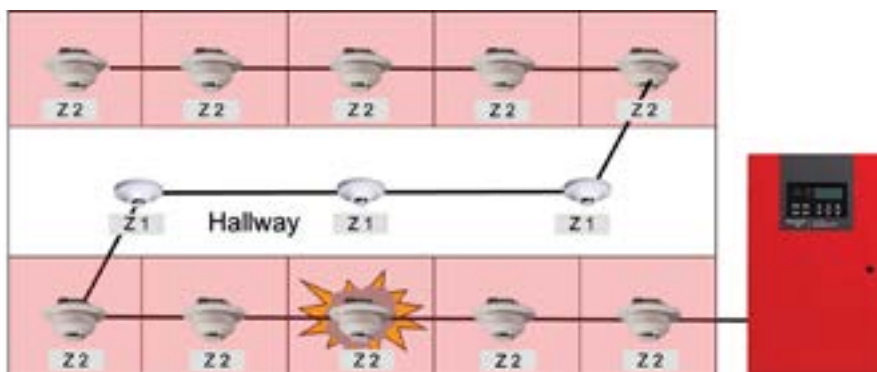
Single Station (SST)



Detector with Sounder Base in Each Room

- Hallway smoke assigned to general alarm zone
- All detectors in rooms can have the same zone that is different from Zone 1
- Sounderbases do not have a group assigned when programmed as SST only

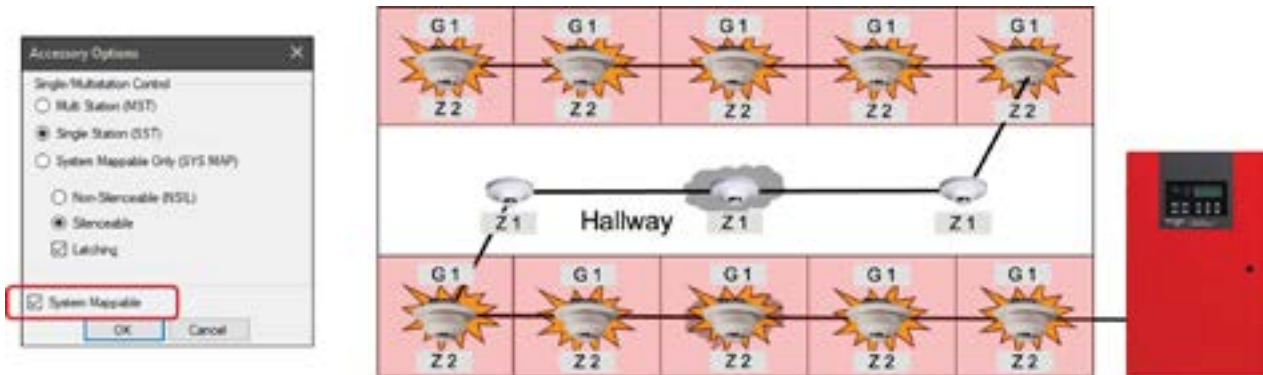
***The System Mappable checkbox is left un-checked**



- When a detector in the room senses smoke
 - It can only activate its own sounder base

***The System Mappable checkbox is left un-checked**

Single Station with System Mappable (SST)



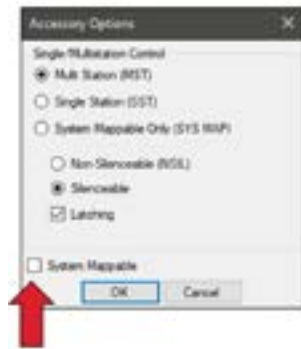
- All detectors in rooms are assigned to a zone and hallway smokes assigned to general alarm zone
- All sounder bases are assigned to a group
- Sounder base activation is determined by SST and SYS MAP
 - When a room smoke is activated, it will activate its own sounder base
 - When the hallway smoke is activated, it will activate all sounder bases

Multi Station (MST)

When one smoke detector with sounder base activates

All sounder bases in that zone will activate

All 3 detectors share zone assignment. If one detector activates, all sounder bases with detectors in that same zone will activate



Assisted Living Example

You can add SYS MAP to make it Multi-Station with System Mappable

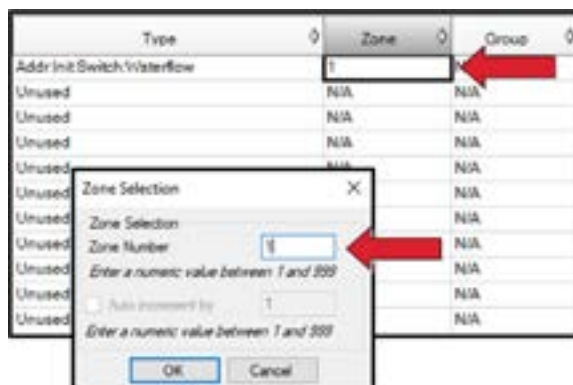
Assigning Points to a Zone

Zone 1 Is the Default

- Automatically assigned when point is added to program
 - Manually or jumpstart

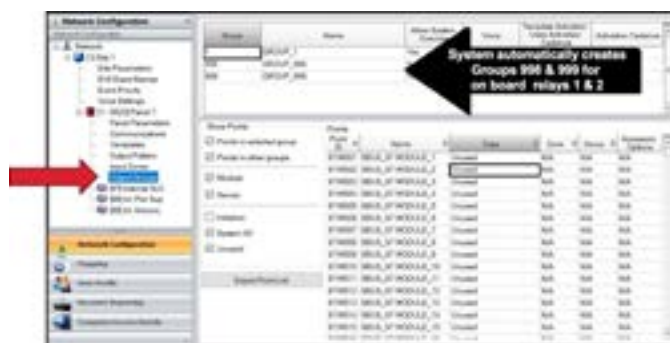
Must Add Zone Before You Can Assign It

- Click on the zone number in the zone column to change the zone
 - Type a number or by right-clicking on the number then changing the zone number
 - Click: OK



Directory Tree

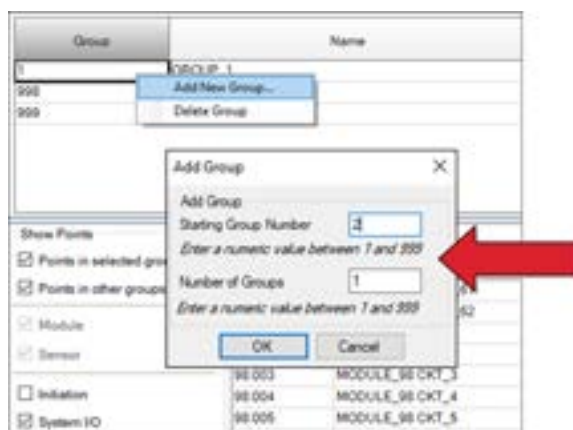
- Click on output groups
- Programming options for output groups and output points



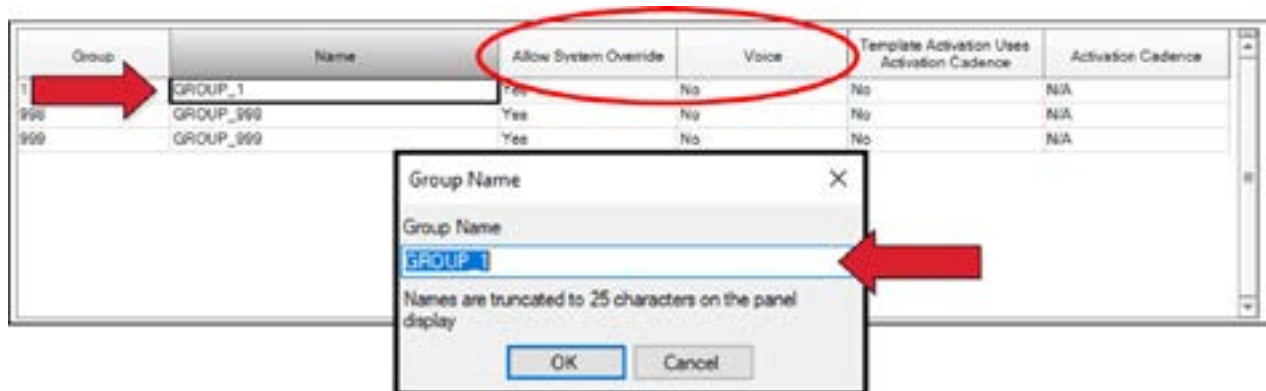
Adding a Group

Left Click, Right Click on a Group To Add More Groups

- Enter starting number
- Indicate number of groups to add



Group Characteristics



Group Name

- Left click, right click to change
- group name, 25 characters max
- Example = horn/strobes circuits

Allow System Override & Voice

- Will be covered in EVS presentation

Template Activation Uses Activation Cadence

If output group is used in a “Template” cadence pattern can be set

- Defaulted as “NO”

Left click, right click to change

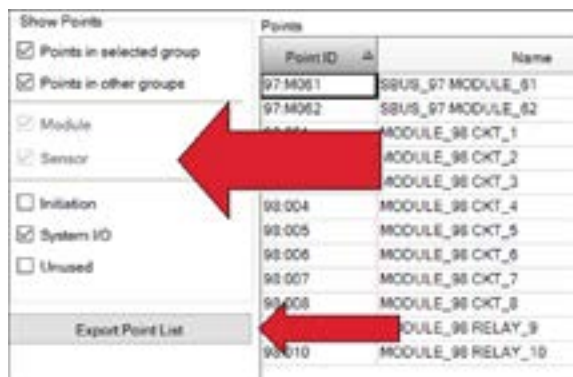
When selected as “YES” activation cadence will appear

- Defaulted as “Constant Output”
- Sync options available for strobes

Template Activation Uses Activation Cadence	Activation Cadence
No	N/A
No	Constant Output
No	March Code
	ANSI 5-3.4E
	Single Stroke
	California Code
	Zone 1 Coded
	Zone 2 Coded
	Zone 3 Coded
	Zone 4 Coded
	Zone 5 Coded
	Zone 6 Coded
	Zone 7 Coded
	Zone 8 Coded
	Custom Output Pattern 1
	Custom Output Pattern 2
	Custom Output Pattern 3
	Custom Output Pattern 4
	Genex Sync
	System Sensor Sync
	Whisper Sync
	Amseco Sync
	Power Isolated
	Ansi 4.0 Temporal
	N/A
	N/A
	N/A
	N/A
	N/A

Output Groups

- Select which points you wish to see
- Recommend viewing output points while in output groups
- Export point list
 - Exports point list in a comma separated value file (.csv)



Q: What is Module 97?

A: Internal SLC

Q: What is Module 98?

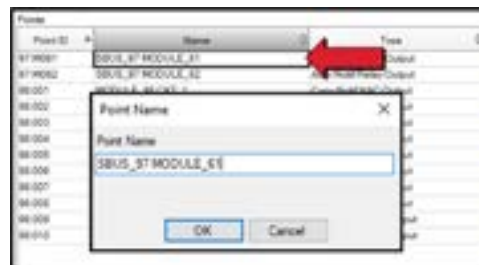
A: Internal Power Supply

REVIEW

Editing Output Point Names

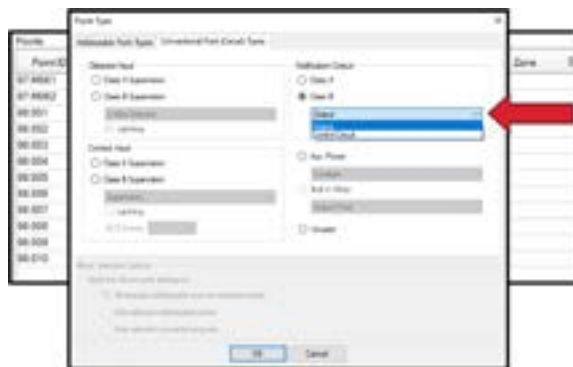
Left Click, Right Click on Name

- Up to 40 characters



Left Click, Right Click on the Point Type

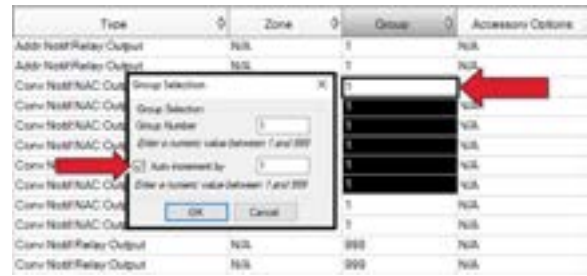
- Select its attributes



***Output for horn strobes etc...and Control Circuit for tripping remote power supplies**

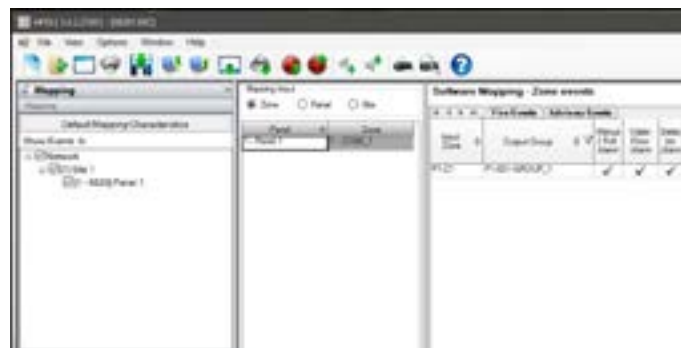
Assigning Outputs to a Group

- Group default is 1
- Left click, right click **Group** and modify what group you want it to be assigned
 - Can auto increment as well
- Must have new group created to change



Software Mapping

- Software Mapping
 - Linking zones and groups together
 - Activated in left column



Mapping Screen

- Displays Sites and Panels
 - Allows the user to select what panels are displayed in the Mapping Input section
- Mapping Input
 - Map by Zone, Panel, or Site
- Software Mapping: Events
 - For each type, you can activate the output groups with specific output patterns

Mapping Input

Zone

Standard mapping
Most used

- Displays the zones to map

Panel

Mapping panel options

- Custom LED annunciator

Site

General site options

- EVS mapping
- F-key mapping



Mapping Tab

Removing Zones from Mapping

Left click, right click on a zone

- Click “Select Remove Zone Mapping”

Mapping for zone will be lost!



Removing Zones from Mapping

Zone will be removed from mapping page

- Can make it easier to focus on specific panel zones



***Notice the Zones (First Floor is missing)**

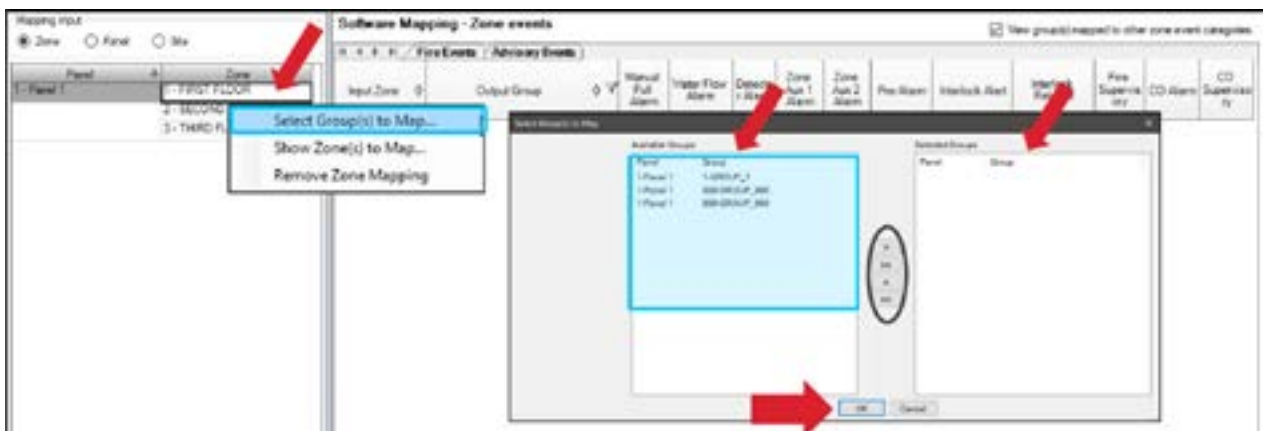
Adding Zones to Mapping

- Left click, right click on a zone
 - Click “Show Zones to Map”
- Left column (select a panel) “can select more than one panel if using networked system”
- Middle column (displays available zones for the selected panel)
 - Can use arrow, double arrow or double click on desired zone to selected zones
- Right column (selected zones) “select all zones that apply”
 - Click “OK”



Selecting Groups to Map

- Left click, right click on a zone
 - Click “Select Groups to Map”
- Left column (select a panel) “can select more than one panel if using networked system”
- Middle column (available groups for the selected panel)
 - Can use arrow, double arrow or double click on desired groups to select groups
- Right column (selected groups) “select all groups that apply for that ZONE”
 - Click “OK”



Zone Mapping

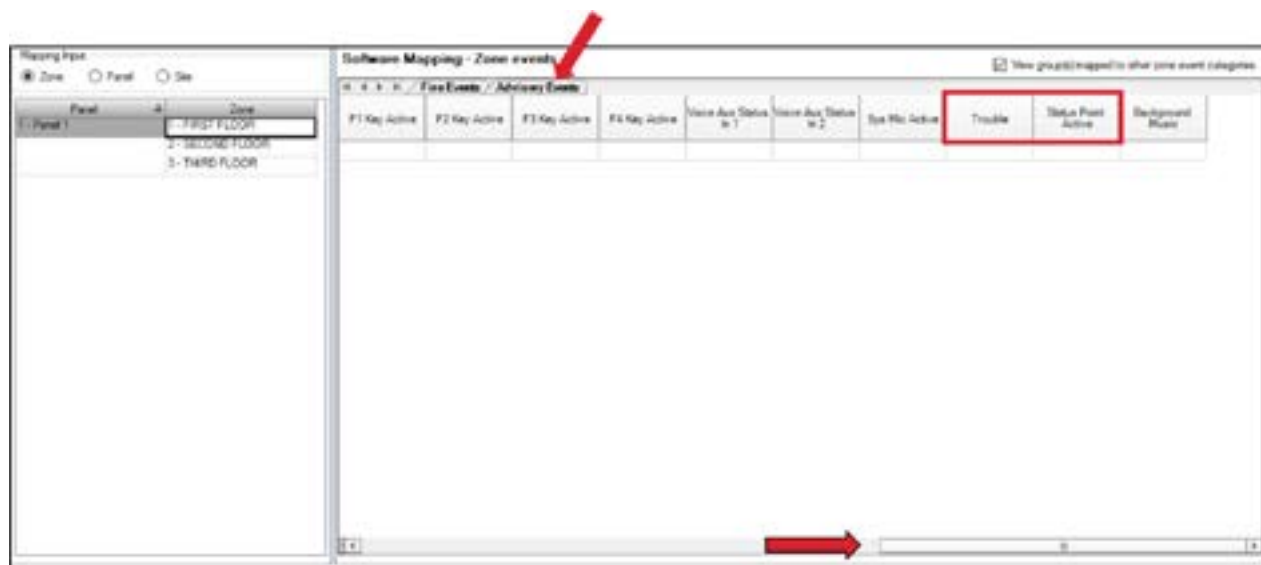
Fire Events

Manual Pull Alarm, Water Flow Alarm, Detector Alarm, Zone Aux 1 Alarm, Zone Aux 2 Alarm, Pre-Alarm, Interlock Alarm, Interlock Release, Fire Supervisory, CO Alarm and CO Supervisory



Advisory Events

- Trouble
- Status point active



***Move the scroll bar all the way to the right to view**

Customize Event Types

- Left click, right click in correct – zone>group>event type
- Left click, right click on the cell to open the mapping characteristics



Mapping Characteristics

Options

Enable or Disable

- Per Event

Latching or Non-Latching

- Resettable or self restore

Silenceable or Non Silenceable

- Non-Active or Activate during Silencing

Output Pattern

- Select Sync



Options

Silence Inhibit

- Prevents silencing until after time expires

Auto Silence

- Silences after time expires

Auto Unsilence

- Re-activates after time expires

Startup Delay

- Delays output activation until time expires

Map Inhibit on F1 – F4

- Disables mapping when function key is active



Customize Event Types

When you edit a zone event and change it from its default settings, a checkbox will appear to note a change has occurred

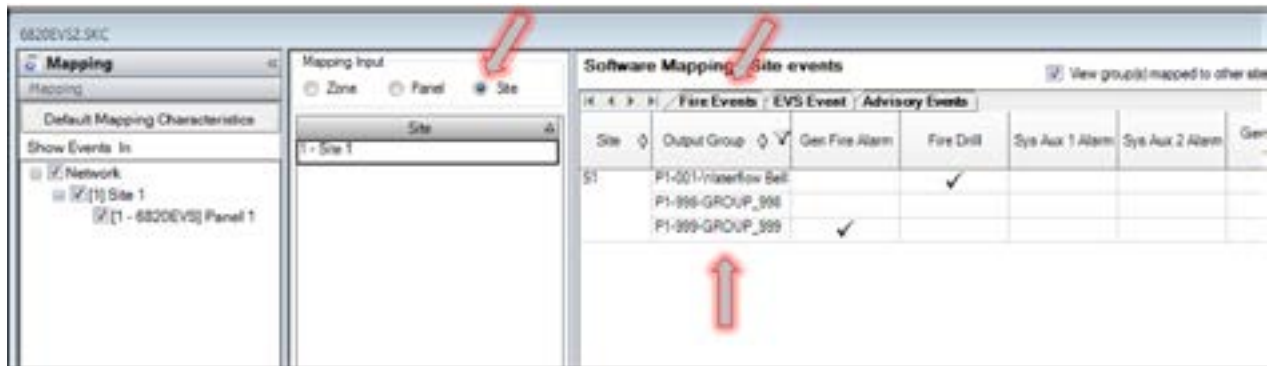
- Red Checkbox
 - Non-silenceable
 - Output pattern
 - Latching
 - Timers
- Orange Checkbox
 - Map inhibit
 - Inhibit on F1 – F4

Mapping “Panel” Event Types

Choose Panel from Mapping Input

Select what groups will activate per panel event type

Mapping “Site” Event Types



Choose Site from Mapping Input

Select what groups will activate per site event type

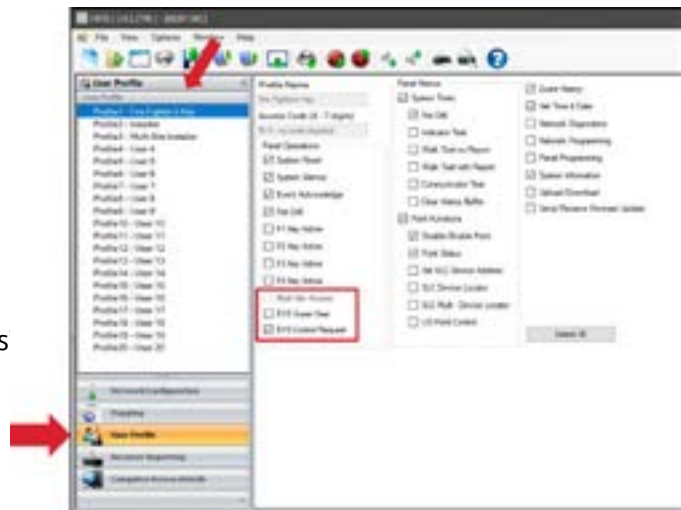
Groups 998 & 999 for relays 1 & 2

Also note the option for EVS mapping

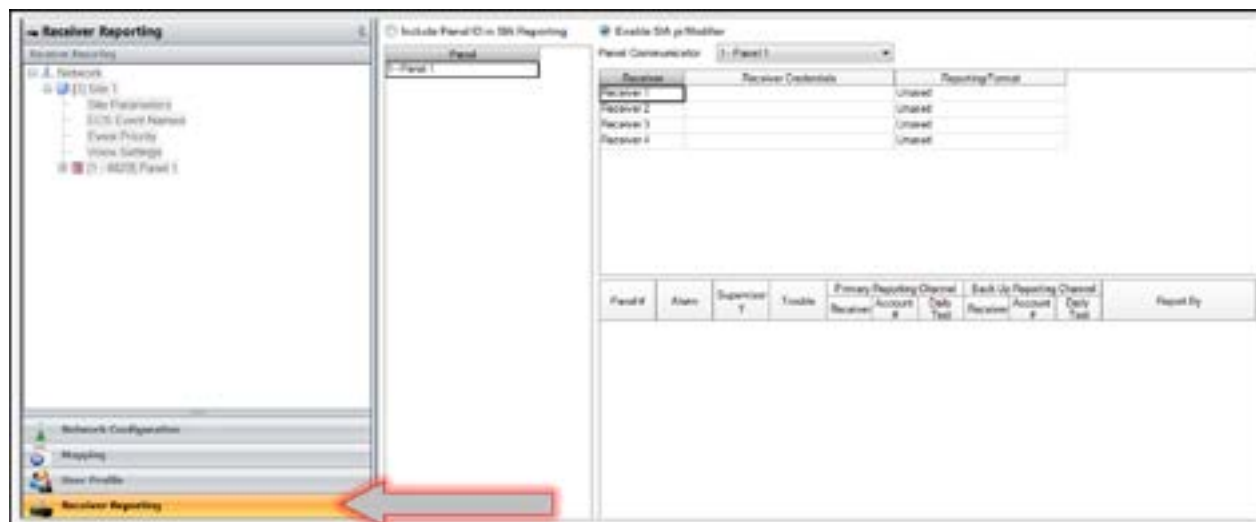
User Profile

User Profile

- Allows to select or de-select certain rights for different profiles
- Click on Profiles to edit
- Profiles 1-3 are Defaulted
 - Profile 1- Firefighter’s key
“No code required”
 - Profile 2- Installer
“Allows all access except multi-site Access and cannot disable EVS options”
 - Profile 3- Multi-site Installer
“All access and can disable EVS option”
 - Profile 4- 20 users
“Customize as desired”



Receiver Reporting



Select Receiver Reporting

Can use any dialer if system has linked panels

- Dialer per Panel
- Dialer for Linked Panels

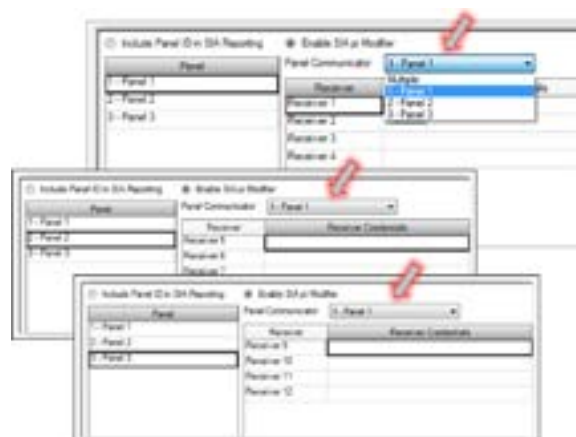
Receiver Reporting for Multi-Panel System

Select Panel One

Click on drop down menu for panel communicator

Repeat Process for Any Additional Panels

Click on drop down menu for panel communicator

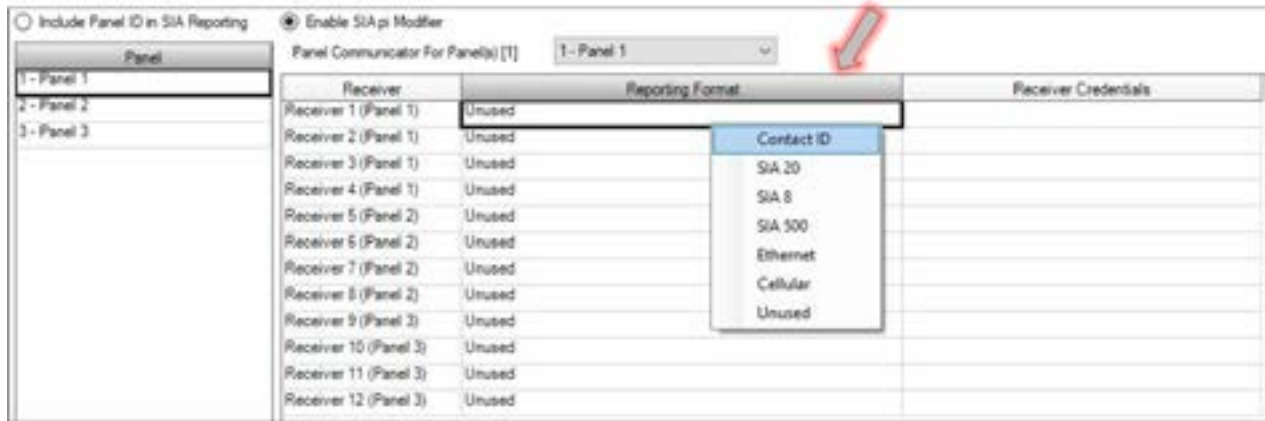


Reporting Formats

Left Click / Right on "Reporting Formats"

Select formats or other communication option

- Ethernet or cellular



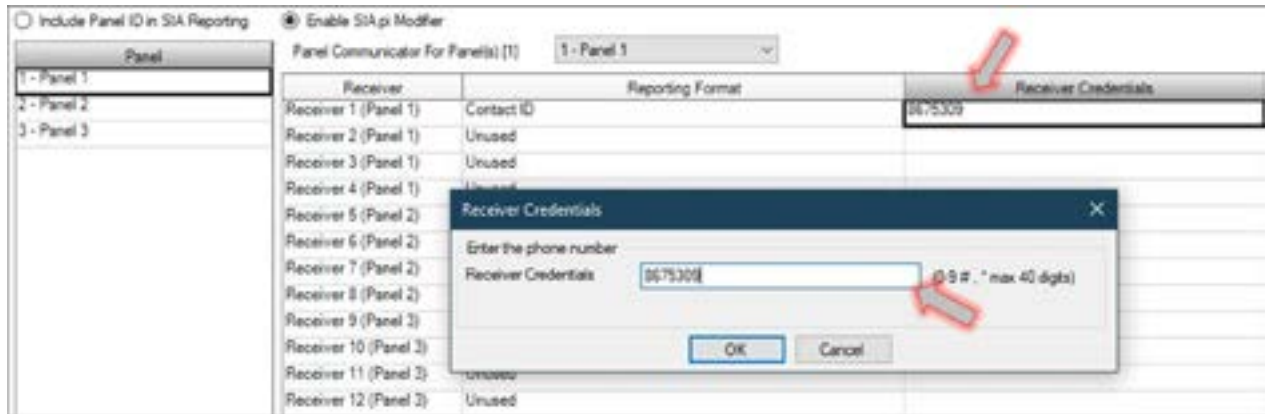
**Ethernet and Cellular are not compatible with external dialers
(Example, HWF2V-COM or Telguard)**

Receiver Reporting

Each Communicator Can Store up to 4 Receiver Numbers

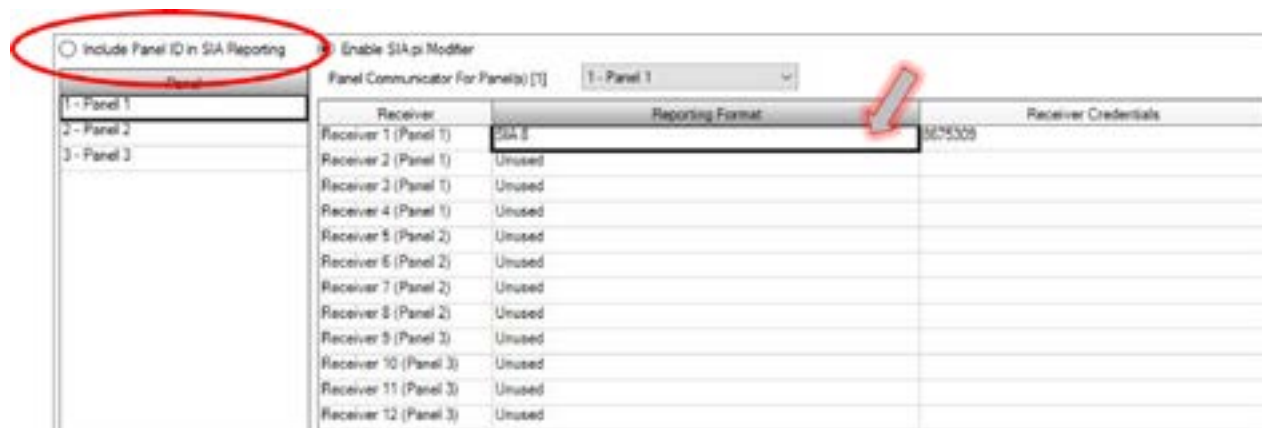
Left click / right on receiver credentials

Receiver credentials box appears enter central station receiver number

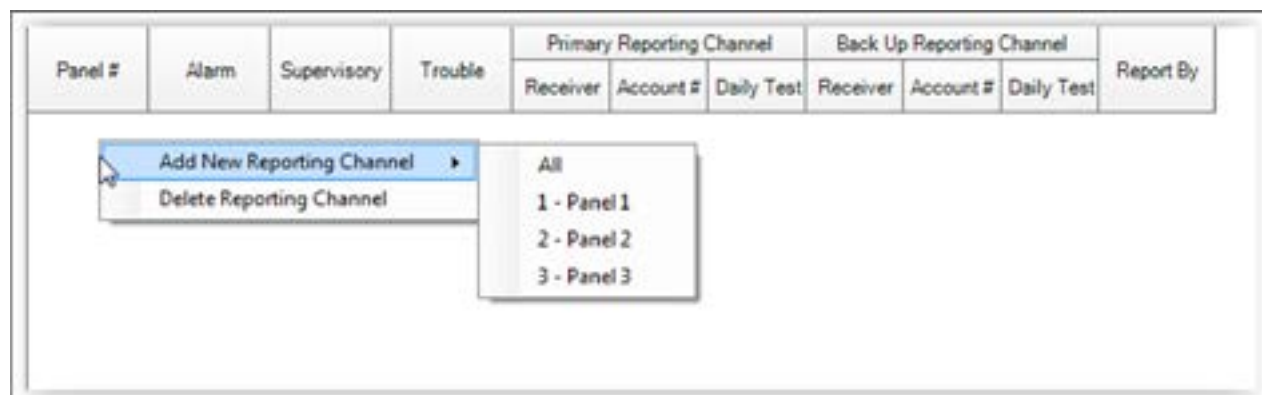


SIA Formats

Can send with panel ID or without panel ID



Right Click To Add a Panel That Will Be Dialing for the Network



***Each panel on the common communication link must have its own channel**

Choose What Conditions Will Initiate a Report

Left click/right click yes or no

- Alarm
- Supervisory
- Trouble
- Daily Test



Select Primary Receiver Number

Left click/right click on "Receiver"

Panel #	Alarm	Supervisory	Trouble	Primary Reporting Channel			Back Up Reporting Channel			Report By
				Receiver	Account #	Daily Test	Receiver	Account #	Daily Test	
1 - Panel 1	Yes	Yes	Yes	Receiver 1		No	Unused		No	Point

Receiver 1
 Receiver 2
 Unused

Enter Primary Central Station Account Numbers

Left click on "Account #" and start typing account #

- 6 digits MAX

Panel #	Alarm	Supervisory	Trouble	Primary Reporting Channel			Back Up Reporting Channel			Report By
				Receiver	Account #	Daily Test	Receiver	Account #	Daily Test	
1 - Panel 1	Yes	Yes	Yes	Receiver 1	123456	No	Unused		No	Point

Account Number XX

Enter the account number

Account Number (0-9 max 6 digits)

If account number has less than 6 digits use leading zeros

Select Back Up Receiver Number

Left click/right click on "Receiver"

Panel #	Alarm	Supervisory	Trouble	Primary Reporting Channel			Back Up Reporting Channel			Report By
				Receiver	Account #	Daily Test	Receiver	Account #	Daily Test	
1 - Panel 1	Yes	Yes	Yes	Receiver 1		No	Receiver 2		No	Point

Receiver 1
 Receiver 2
 Unused

Enter Back Up Central Station Account Numbers

Left click on "Account #" and start typing account #

- 6 digits MAX

Panel #	Alarm	Supervisory	Trouble	Primary Reporting Channel			Back Up Reporting Channel			Report By
				Receiver	Account #	Daily Test	Receiver	Account #	Daily Test	
1 - Panel 1	Yes	Yes	Yes	Receiver 1	123456	Yes	Receiver 2		No	Point

Account Number

Enter the account number

Account Number (0-9 max 6 digits)

Choose Report By

Point or zone

Panel #	Alarm	Supervisory	Trouble	Primary Reporting Channel			Back Up Reporting Channel			Report By
				Receiver	Account #	Daily Test	Receiver	Account #	Daily Test	
1 - Panel 1	Yes	Yes	Yes	Receiver 1	123456	Yes	Receiver 2	123456	No	Point

Point

Zone

To add Receiver 3

- Add Receiver 3 information
- Right click to add panel that will dial receiver 3
- Choose conditions for report

Panel #	Alarm	Supervisory	Trouble	Primary Reporting Channel			Back Up Reporting Channel			Report By
				Receiver	Account #	Daily Test	Receiver	Account #	Daily Test	
1 - Panel 1	Yes	Yes	Yes	Receiver 1	01234	Yes	Receiver 2	01234	Yes	Point
1 - Panel 1	Yes	Yes	Yes	Receiver 3	12340	No	Unused		No	Point

Multi Panel Reporting Channels

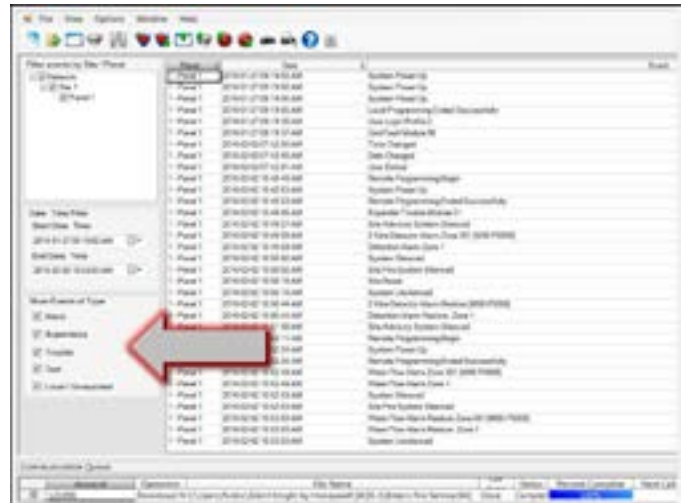
- Add all panels
- Set all panels to have the same reporting channels

Panel #	Alarm	Supervisory	Trouble	Primary Reporting Channel			Back Up Reporting Channel			Report By
				Receiver	Account #	Daily Test	Receiver	Account #	Daily Test	
1 - Panel 1	Yes	Yes	Yes	Receiver 1	12340	Yes	Receiver 2	00255	Yes	Point
2 - Panel 2	Yes	Yes	Yes	Receiver 1	12340	Yes	Receiver 2	00255	Yes	Point
3 - Panel 3	Yes	Yes	Yes	Receiver 1	12340	Yes	Receiver 2	00255	Yes	Point

Event History

Shows last 1000 events

- By panel and site
- Can be sorted
- Can narrow view
 - Just Alarms
 - Just Troubles
- Check what kinds of events you want to see...



Detector Status Report

Panel	Zone	Module	Port	Name	Type	Function	Sam	ATL	ACA	MT	ST	CAV	CEL	PCACO	RAI	Status	NFPA72
1-Panel 1.1	87	1		SENS_07_SENSOR_1	Detector	Photo Detector	3.5	262	987	113	120	360	80	360	80	Normal	Yes
1-Panel 1.1	87	2		SENS_07_SENSOR_2	Detector	Photo Detector	3.5	262	987	113	120	361	80	362	80	Normal	Yes
1-Panel 1.1	87	3		SENS_07_SENSOR_3	Detector	CO Alarm, Fire/Alarm CO	4.3	285	905	000	000	382	80	100ppm	85	Normal	Yes

Displays values for all addressable detectors

- Indicates status
 - Normal, Maintenance Alert, Cal Trouble
- Indicates if detectors meet NFPA72 standards
- Can be sorted
 - All Silent Knight addressable panels use a method called drift compensation, where the detectors continuously monitor the smoke chamber and provide the panel with a digital value of its current status each time the detector is polled.

Print out the Detector Status Report for your clients once a year

Report Provides definitions as well

SILENT KNIGHT
By Honeywell

Detector Status

Contributor's Name: XXXXXXXXXX
Address: _____

Legend

Bell: Lulls the alarm sensitivity to prevent gas build-up or leakage if alarm will cause an alarm.

ATL: Alarm Threshold: Analog value at which a alarm will indicate an alarm condition.

ACA: Average Clean Air: Same as the CAI except averaged and filtered over time.

MT: Maintenance Threshold: Analog value at which a point is in need of inspection or maintenance.

TT: Trouble Threshold: Analog value at which a point indicate a trouble condition.

CTR: Current Analog Value: Instantaneous analog value of the sensor.

CTRF: Current Filtered: Analog value from above the analog value is to alarm.

PCR: Peak Clean Air: Indicates the highest analog value for the sensor.

PWR: Peak Power Alarm: Same as the CAI except now uses the peak value to alarm.

Malfunction: Normal: Detector requires no maintenance.
Call Alarm: Clearing recommended, Detector is close to non-compliance.
Call Trouble: Detector is not in compliance with NFPA72 - needs clearing etc.

MPPAS: Has issues that the detector is within compliance of NFPA72 requirements for a detector operating within its listed and listed sensitivity range.
To ensure it is not in compliance.

Alarm	Zone	Address	Name	Model	Type	Bell	ATL	ACA	MT	TT	CTR	CTRF	PCR	PWR	Status	MPPAS
1	1	10	10	10	High Temp Heat	10	100	100	100	100	100	100	100	100	Normal	Yes
1	1	10	10	10	Acoustic Detector	10	100	100	100	100	100	100	100	100	Normal	Yes
1	1	10	10	10	Photo Detector	10	100	100	100	100	100	100	100	100	Normal	Yes

Email Address: _____ Report Created on: 2004-03-08 12:00PM Page 1 of 1

A printed report provides a legend with definitions



#FEDLC #FireFam
#GenerationTrained

#NFPA10 #FireSafety #NFPA

#OurWorkSavesLives #NFPA72

#NFPA17A #FireExtinguisher

#HandsOnTraining #FlameGame #NFPA101

#NFPA96 #KitchenSuppression #FireProtection

www.FEDLearningCenter.com

@FEDLearningCenter

